



US009805512B1

(12) **United States Patent**  
**Katz et al.**

(10) **Patent No.:** **US 9,805,512 B1**  
(45) **Date of Patent:** **Oct. 31, 2017**

(54) **STEREO-BASED CALIBRATION APPARATUS**

(58) **Field of Classification Search**

(71) Applicant: **Oculus VR, LLC**, Menlo Park, CA (US)

None  
See application file for complete search history.

(72) Inventors: **Dov Katz**, Irvine, CA (US); **Jennifer Leigh Dolson**, Menlo Park, CA (US); **Simon Hallam**, San Jose, CA (US); **Kieran Tobias Levin**, Redwood City, CA (US); **Eric Loren Vaughan**, Half Moon Bay, CA (US); **Klas Petter Ivmark**, Belmont, CA (US); **Andrew Melim**, Redwood City, CA (US)

(56) **References Cited**

U.S. PATENT DOCUMENTS

9,589,348	B1 *	3/2017	Linde	.....	G06T 7/0018
9,619,021	B2 *	4/2017	Cho	.....	G02B 27/0093
2012/0242560	A1 *	9/2012	Nakada	.....	G09G 3/3406
					345/8
2013/0128364	A1 *	5/2013	Wheeler	.....	A61B 3/113
					359/630
2014/0361977	A1 *	12/2014	Stafford	.....	G02B 27/0093
					345/156
2017/0147066	A1 *	5/2017	Katz	.....	G06F 3/012

(73) Assignee: **Oculus VR, LLC**, Menlo Park, CA (US)

\* cited by examiner

(\* ) Notice: Subject to any disclaimer, the term of this patent is extended or adjusted under 35 U.S.C. 154(b) by 166 days.

*Primary Examiner* — Peter Hoang

(74) *Attorney, Agent, or Firm* — Fenwick & West LLP

(21) Appl. No.: **14/941,334**

(57) **ABSTRACT**

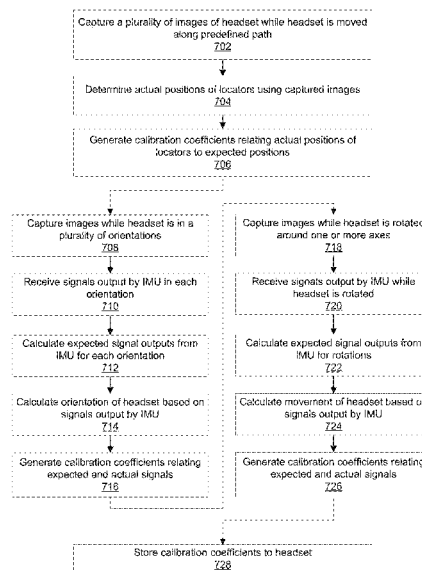
(22) Filed: **Nov. 13, 2015**

A virtual reality (VR) headset calibration system calibrates a VR headset, which includes a plurality of locators and an inertial measurement unit (IMU) generating output signals indicative of motion of the VR headset. The system comprises a calibration controller configured to receive a headset model of the VR headset that identifies expected positions of each of the locators. The controller controls cameras to capture images of the VR headset while the headset is moved along a predetermined path. The images detect actual positions of the locators during the movement along the predetermined path. Calibration parameters for the locators are generated based on differences between the actual positions and the expected positions. Calibration parameters for the IMU are generated based on the calibration parameters for the locators and differences between expected and actual signals output by the IMU. The calibration parameters are stored to the VR headset.

(51) **Int. Cl.**  
**G09G 5/00** (2006.01)  
**G06T 19/00** (2011.01)  
**G02B 27/01** (2006.01)  
**H04N 5/247** (2006.01)  
**G06T 7/00** (2017.01)  
**G06K 9/62** (2006.01)  
**G06T 7/20** (2017.01)

(52) **U.S. Cl.**  
CPC ..... **G06T 19/006** (2013.01); **G02B 27/017** (2013.01); **G06K 9/6201** (2013.01); **G06T 7/004** (2013.01); **G06T 7/2093** (2013.01); **H04N 5/247** (2013.01); **G02B 2027/0178** (2013.01)

**20 Claims, 8 Drawing Sheets**



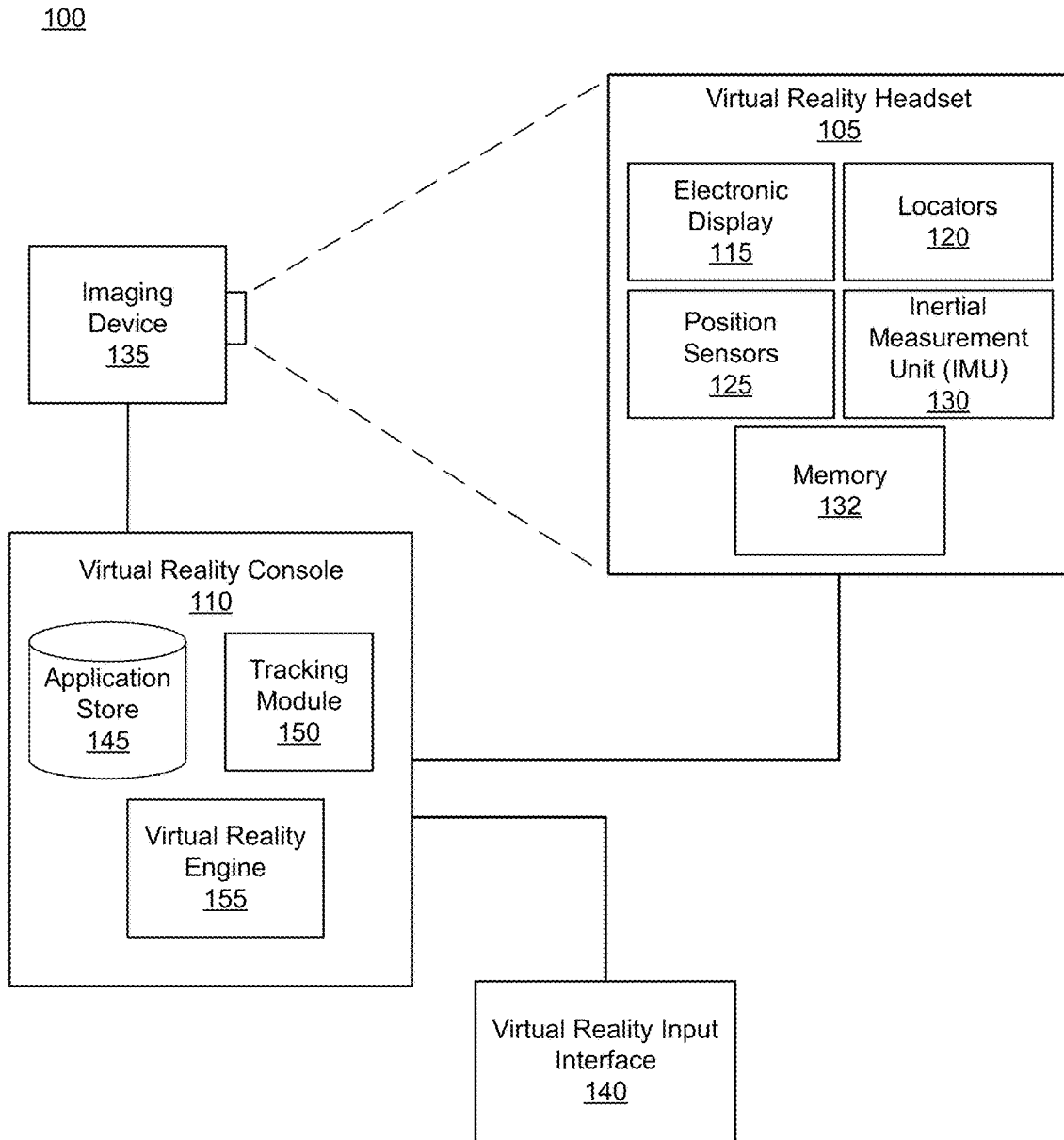


FIG. 1

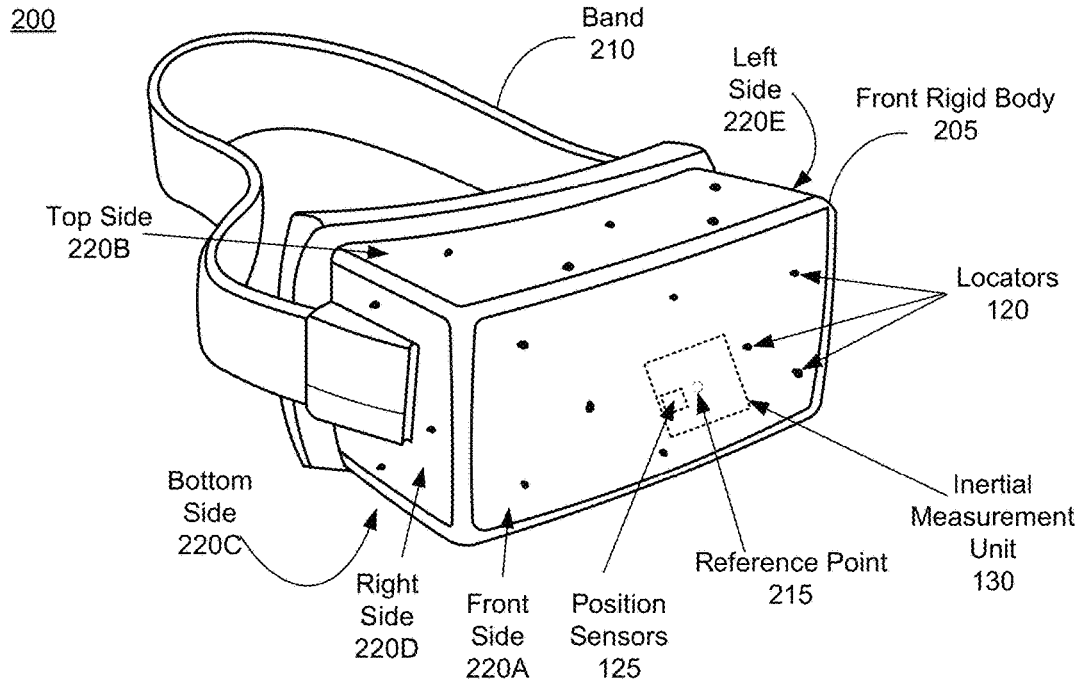


FIG. 2A

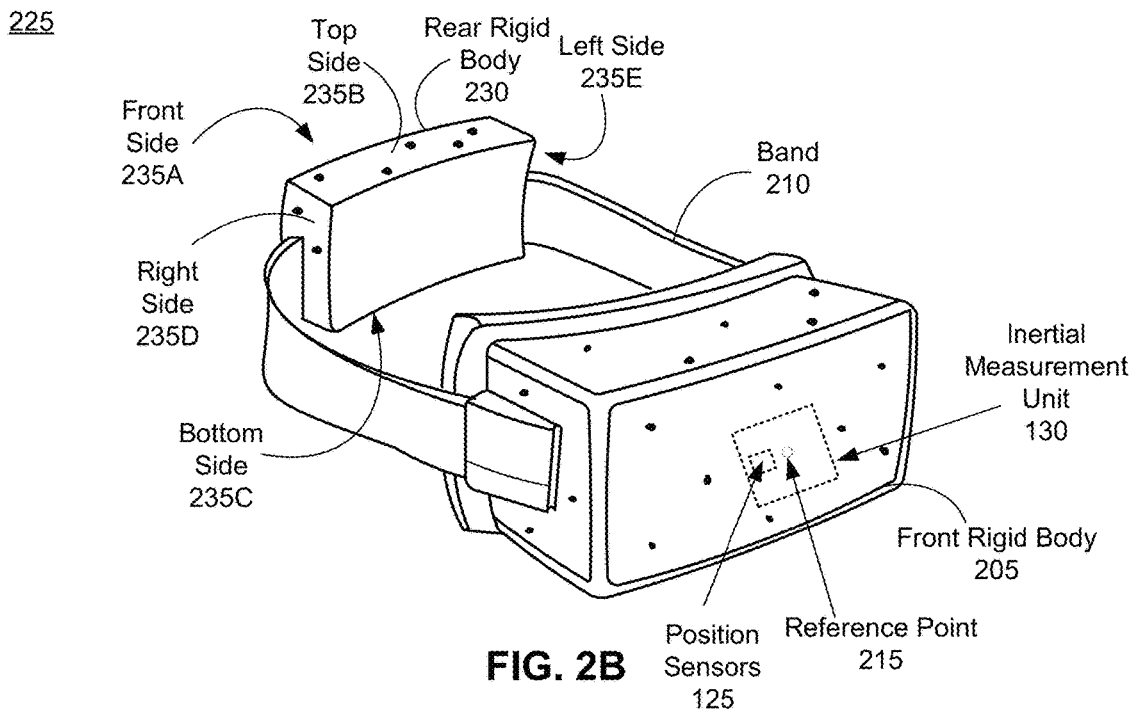


FIG. 2B

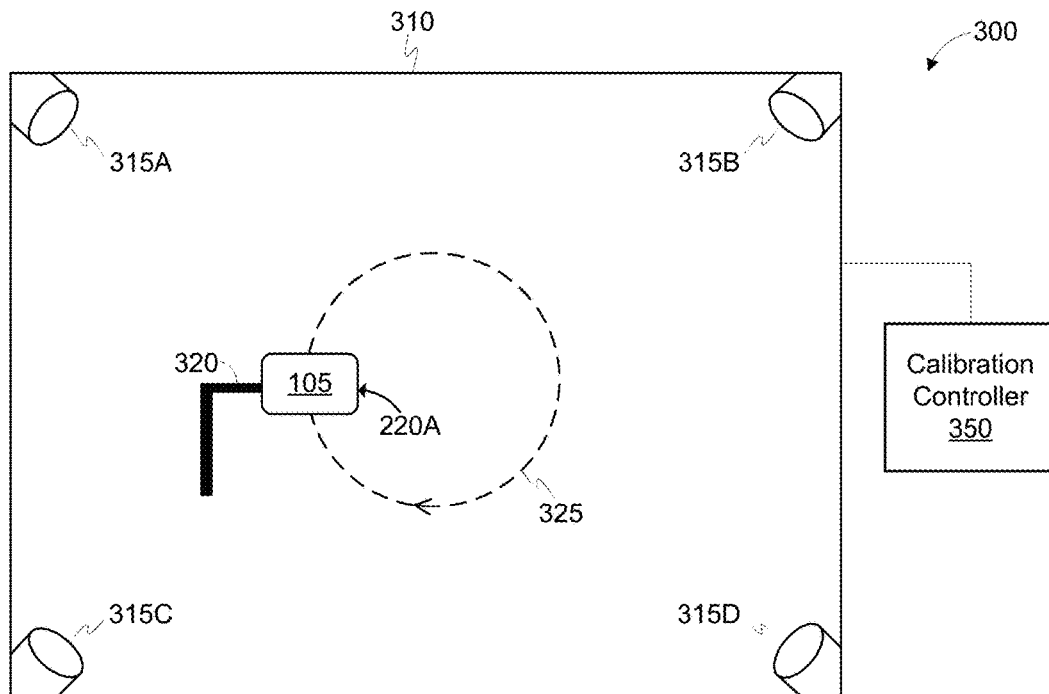


FIG. 3A

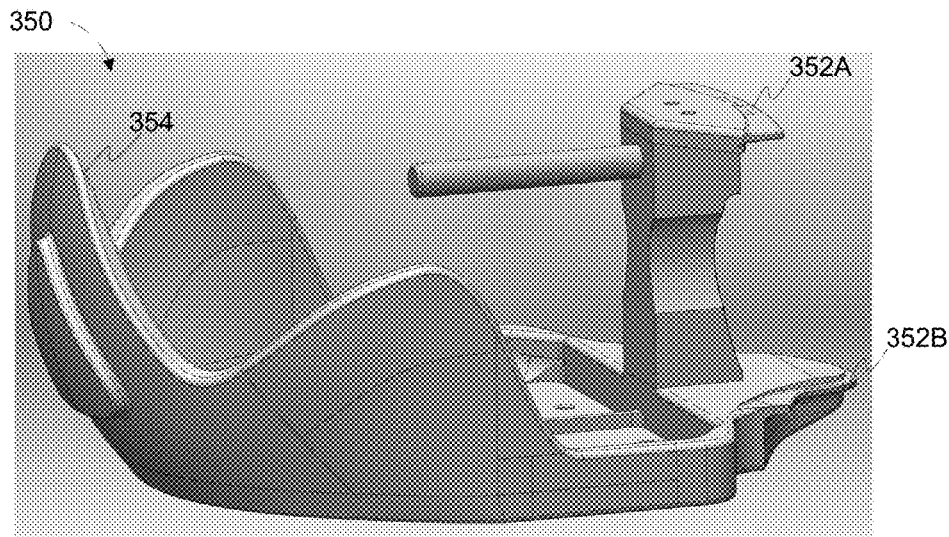


FIG. 3B

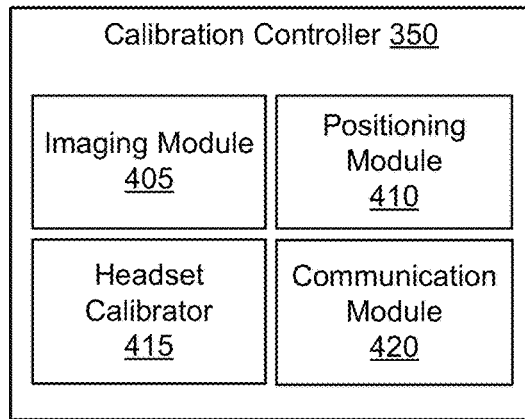


FIG. 4

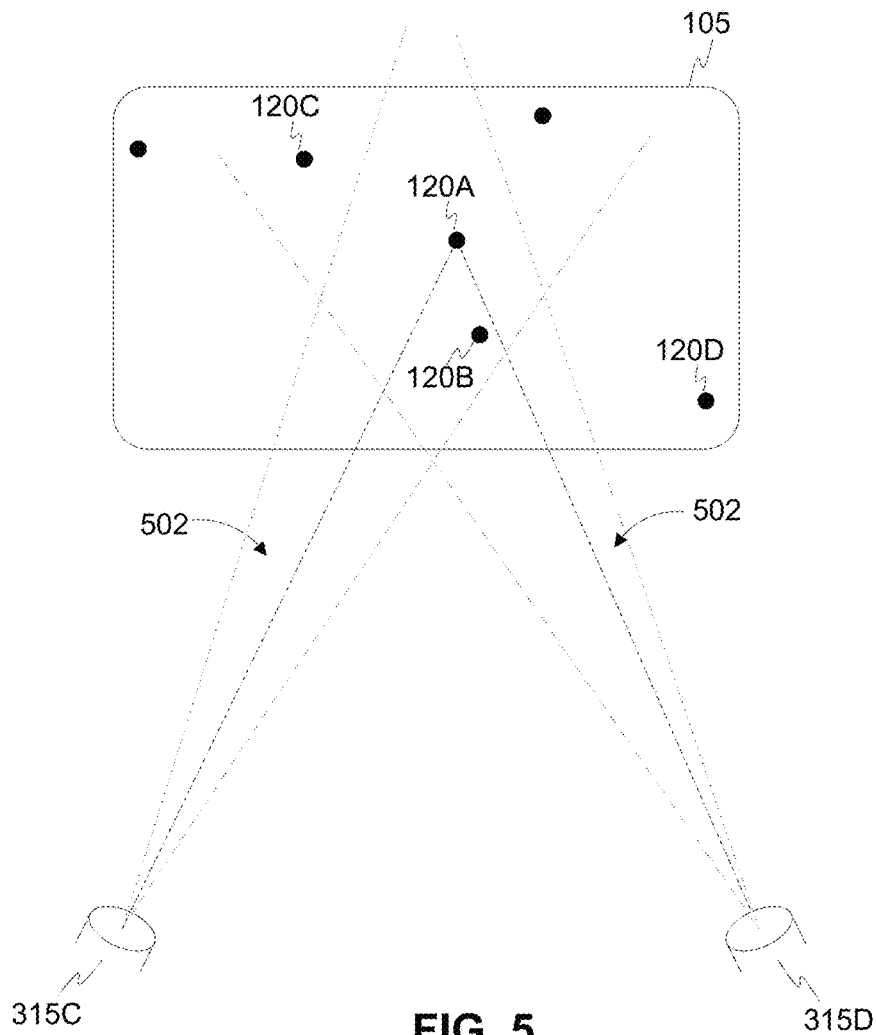


FIG. 5

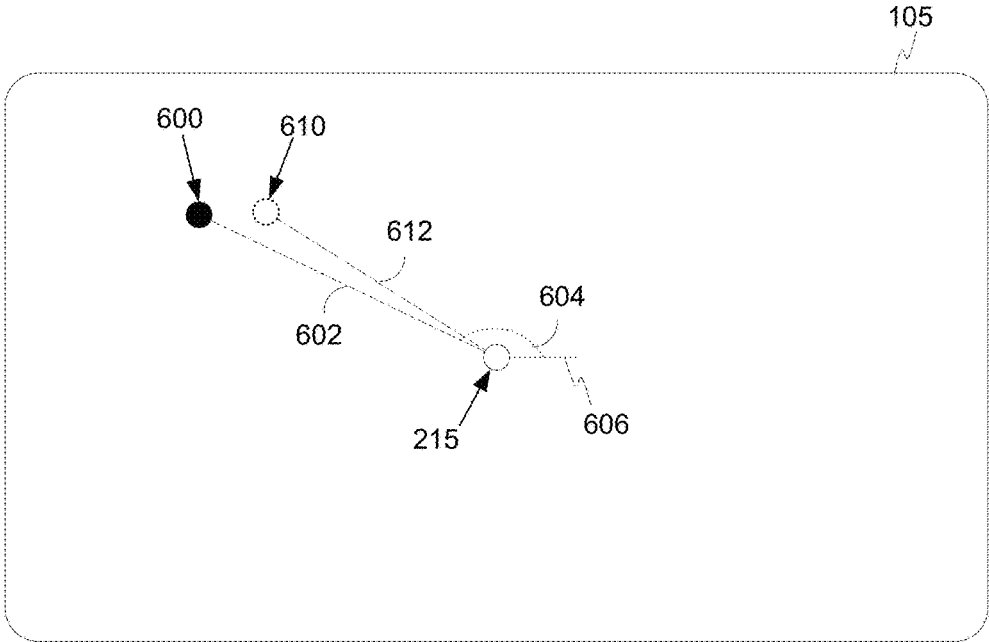


FIG. 6A

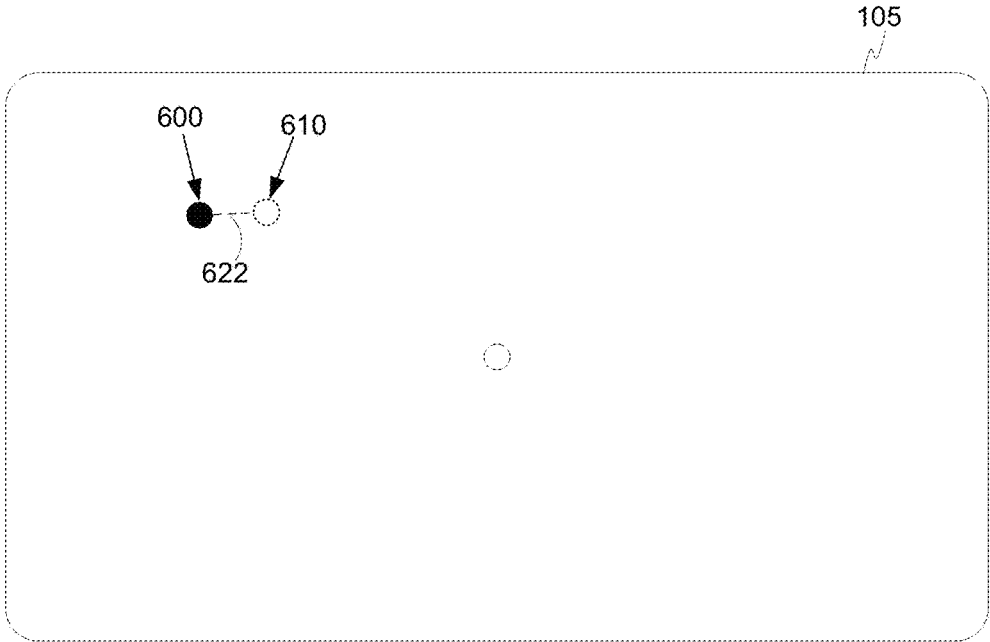


FIG. 6B

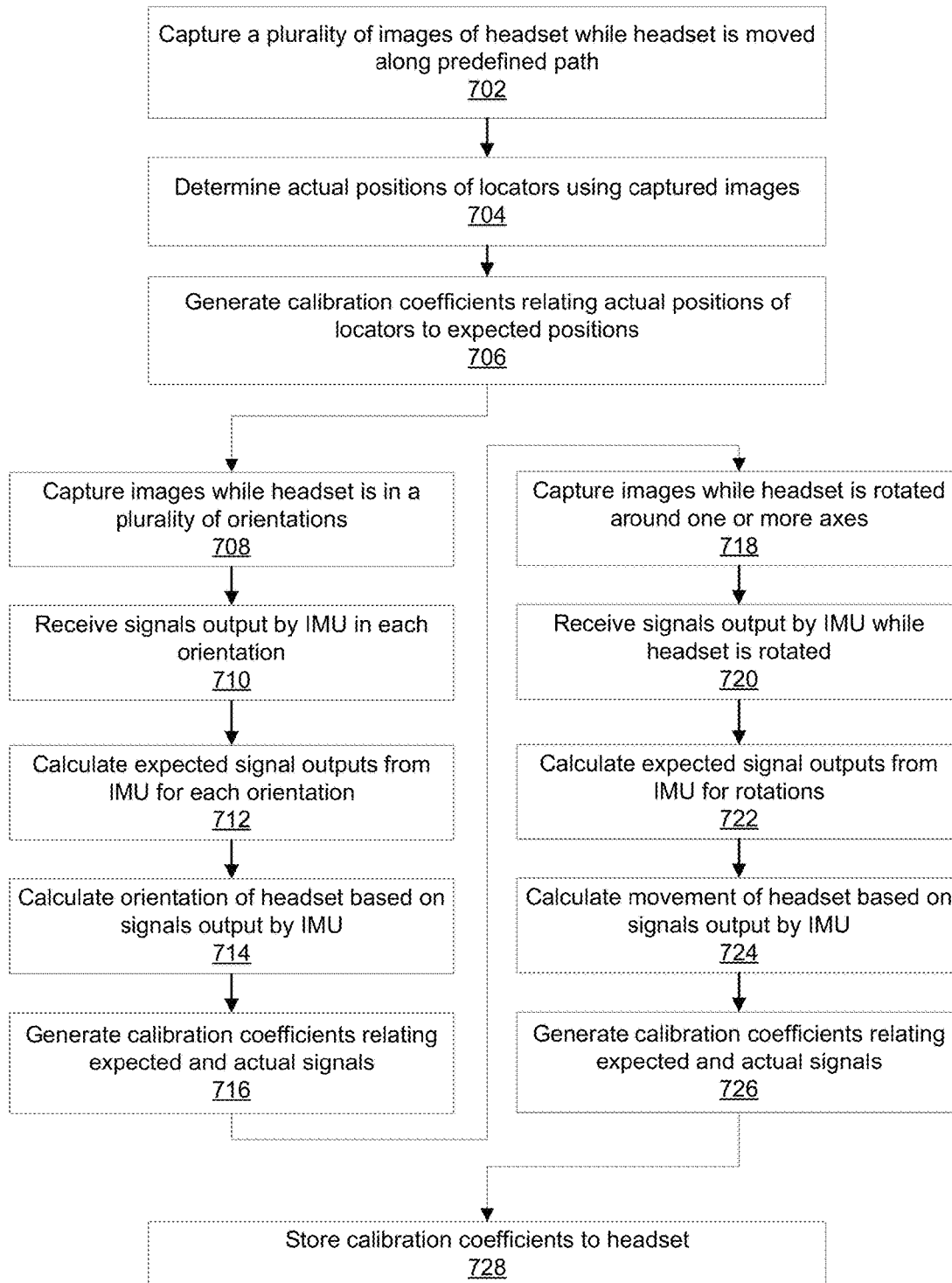


FIG. 7

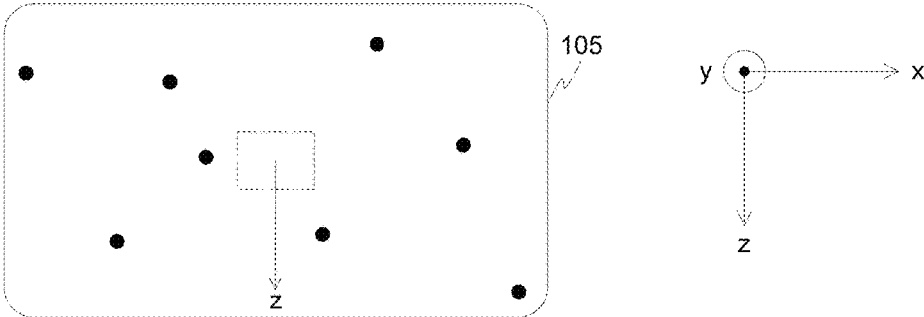


FIG. 8A

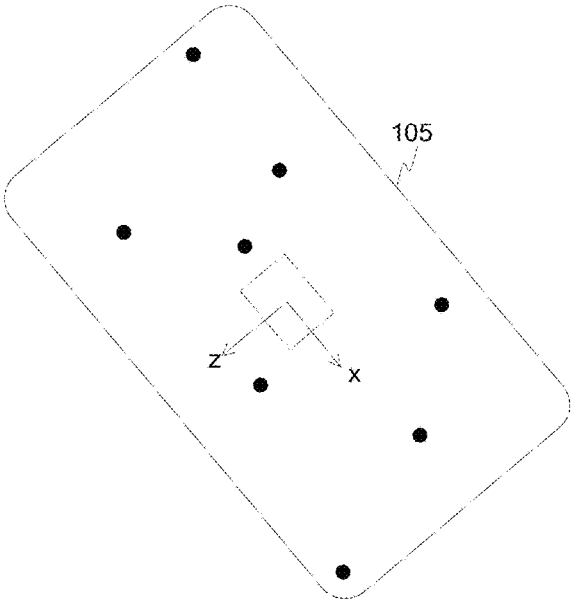


FIG. 8B

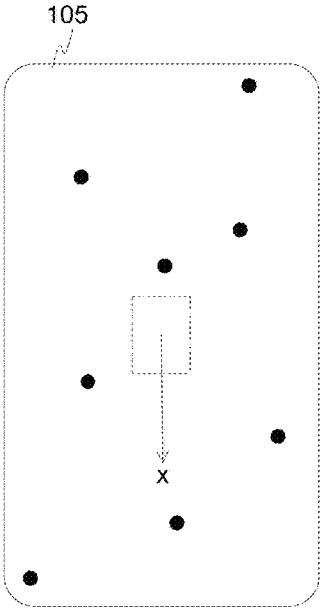


FIG. 8C



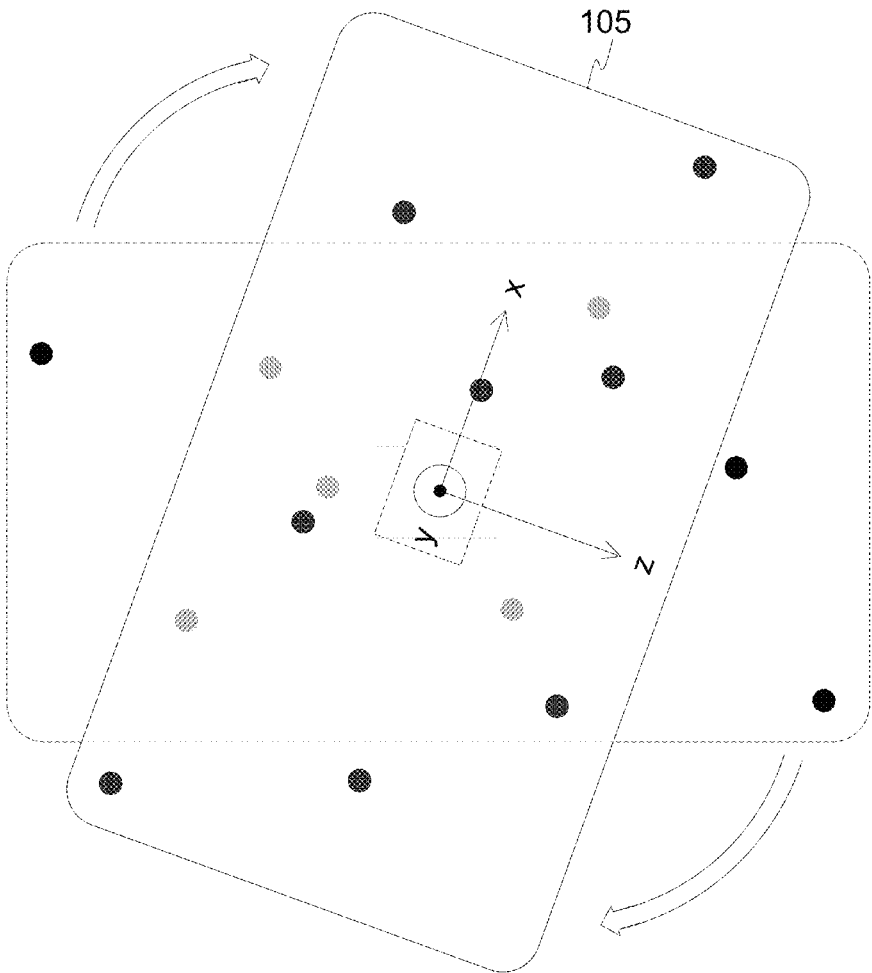


FIG. 9

## STEREO-BASED CALIBRATION APPARATUS

## BACKGROUND

The present disclosure generally relates to calibration systems, and more specifically relates to calibrating virtual reality systems.

Virtual reality (VR) devices deliver media to users based at least in part on the position and movement of a headset worn by a user. These devices include components used to determine the position and movement of the headset. However, due to manufacturing tolerances and other variations introduced during manufacturing or use of the VR headsets, these components may differ from an ideal model of the headset. Thus, cameras and other equipment that assess the location of these components may not produce an output identical to the output expected from the headset model. As a result of the differences between the actual and expected outputs, the virtual reality device may not be able to accurately track the position or motion of the headset. For example, the differences may cause the device to identify motion of the headset when there is none or to calculate incorrect rates of the motion. These inaccurate measurements may cause a dissonance between a user's actual motion and media presented to the user via the headset.

## SUMMARY

A headset calibration system calibrates components of a virtual reality (VR) headset to compensate for differences between headsets (e.g., due to manufacturing tolerances), enabling a VR system associated with the VR headset to maintain tracking of the VR headset. In one embodiment, the components calibrated by the calibration system include locators on the VR headset and an inertial measurement unit (IMU). A locator is an object located in a specific position on the VR headset relative to one or more other components, such as another locator, of the VR headset and relative to a reference point on the VR headset. The IMU is a device that generates output signals indicative of motion of the VR headset, and may include various sensors to generate such signals, such as accelerometers, gyroscopes, and other inertial measurement systems.

In one embodiment, the headset calibration system includes a plurality of cameras, an imaging space imaged by the cameras, and a support arm configured to couple to a VR headset and move the VR headset in predetermined manners. For example, the support arm moves the VR headset along a predetermined path through the imaging space to calibrate the locators, and moves the VR headset in one or more other predetermined manners to calibrate the IMU. The system also includes a calibration controller configured to calibrate the VR headset by determining differences between expected and actual positions of the locators on the VR headset and differences between expected and actual outputs of the IMU.

The calibration controller accesses a memory that stores a set of expected positions of the locators on the headset. The calibration controller controls the cameras to capture images of the VR headset while the headset is moved along the predetermined path. The captured images detect actual positions of the locators on the VR headset, which may differ from the expected positions due to manufacturing tolerances. Using images captured at each position of the VR headset, the calibration controller identifies the respective position of the VR headset in the imaging space and determines positions of at least a subset of the locators in the

imaging space. The calibration controller uses the determined position of each locator in the subset in the imaging space and the identified position of the VR headset to compute a difference between an actual position of each locator in the subset on the VR headset and an expected position of the locator. Based on the computed differences, the calibration controller generates calibration parameters for the locators. In one embodiment, the parameters for the locators represent transformations that when applied to positions of the locators in the imaging space to yield the expected positions of the locators on the VR headset.

The calibration controller also generates calibration parameters for the IMU based on the calibration parameters for the locators and differences between expected signals output by the IMU and actual signals output by the IMU. In one embodiment, the headset calibration system performs both a static calibration (e.g., measuring signals output by the IMU while the headset is held at a specified position) and a dynamic calibration (e.g., measuring signals output by the IMU while the headset is moved). The calibration parameters for the IMU may represent transformations that when applied to actual signals output by the IMU yield the expected signals.

The calibration controller stores the calibration parameters for the locators and the IMU to the headset. The calibration parameters can then be used during operation of the headset to accurately identify positions and motion of the headset.

## BRIEF DESCRIPTION OF THE DRAWINGS

FIG. 1 is a block diagram of a system environment in which a virtual reality console operates, in accordance with an embodiment.

FIG. 2A is a wire diagram of a virtual reality headset, in accordance with an embodiment.

FIG. 2B is a wire diagram of a virtual reality headset including a front rigid body and a rear rigid body, in accordance with an embodiment.

FIG. 3A is a schematic diagram of a headset calibration system, in accordance with an embodiment.

FIG. 3B illustrates an example headset support, in accordance with an embodiment.

FIG. 4 is a block diagram of a calibration controller, in accordance with an embodiment.

FIG. 5 illustrates an example triangulation of a position of a locator, in accordance with an embodiment.

FIGS. 6A-6B illustrate embodiments for specifying distances between actual and expected positions of locators, in accordance with an embodiment.

FIG. 7 is a flowchart illustrating a process for calibrating a VR headset, in accordance with an embodiment.

FIGS. 8A-8C illustrate example orientations of a VR headset for calibrating an inertial measurement unit (IMU), in accordance with an embodiment.

FIG. 9 illustrates an example rotation of a VR headset for calibrating an inertial measurement unit, in accordance with an embodiment.

The figures depict embodiments of the present disclosure for purposes of illustration only. One skilled in the art will readily recognize from the following description that alternative embodiments of the structures and methods illustrated herein may be employed without departing from the principles, or benefits touted, of the disclosure described herein.

## Virtual Reality System Architecture

FIG. 1 is a block diagram of one embodiment of a virtual reality (VR) system environment **100** in which a VR headset **105** operates. The system environment **100** shown by FIG. 1 comprises the VR headset **105**, an imaging device **135**, and a VR input interface **140** that are each coupled to a VR console **110**. While FIG. 1 shows an example system **100** including one VR headset **105**, one imaging device **135**, and one VR input interface **140**, in other embodiments any number of these components may be included in the system **100**. For example, there may be multiple VR headsets **105** each having an associated VR input interface **140** and being monitored by one or more imaging devices **135**, with each VR headset **105**, VR input interface **140**, and imaging devices **135** communicating with the VR console **110**. In alternative configurations, different and/or additional components may be included in the system environment **100**.

As further described below, the virtual reality console **110** receives movement information from the VR headset describing movement of the VR headset **105** as determined by sensors on the VR headset **105**. In addition, the virtual reality console **110** receives image information from the imaging device **135** showing the VR headset **105** as captured by the imaging device **135**. The position of the virtual reality headset **105** in space is determined using the movement information and the image information. Before using the movement information, the movement information may be translated from observed movement information using calibration data for the sensors that captured the data, in order to correct for manufacturing and other differences between different VR headsets. In addition, the image information is used to detect the position of locators on the VR headset **105**. Each of the locators may also differ from headset to headset, and a set of calibration parameters are used to convert the identified positions of the locators from the imaging device to account for the particular difference of the locators on the VR headset **105** observed by the imaging device **135** relative to a model of the VR headset **105**. Using these calibration parameters, the virtual reality console **110** may correct for differences between different VR headsets and more accurately model the movement of the VR headset in a virtual reality system.

The VR headset **105** is a head-mounted display that presents media to a user. Examples of media presented by the VR head set include one or more images, video, audio, or some combination thereof. In some embodiments, audio is presented via an external device (e.g., speakers and/or headphones) that receives audio information from the VR headset **105**, the VR console **110**, or both, and presents audio data based on the audio information. Example embodiments of the VR headset **105** are further described below in conjunction with FIGS. 2A and 2B.

In various embodiments, the VR headset **105** may comprise one or more rigid bodies, which may be rigidly or non-rigidly coupled to each other. A rigid coupling between rigid bodies causes the coupled rigid bodies to act as a single rigid entity. In contrast, a non-rigid coupling between rigid bodies allows the rigid bodies to move relative to each other. An embodiment of the VR headset **105** that includes two rigid bodies that are non-rigidly coupled together is further described below in conjunction with FIG. 2B.

The VR headset **105** includes an electronic display **115**, one or more locators **120**, one or more sensors **125**, and an inertial measurement unit (IMU) **130**. The electronic display **115** displays images to the user in accordance with data

received from the VR console **110**. In various embodiments, the electronic display **115** may comprise a single electronic display or multiple electronic displays (e.g., a display for each eye of a user). In some embodiments, the media provided to the electronic display **115** for presentation to the user is pre-distorted to aid in correction of one or more types of optical errors. Additionally, the optical components may increase a field of view of the displayed media through magnification or through another suitable method. For example, the field of view of the displayed media is such that the displayed media is presented using almost all (e.g., 110 degrees diagonal), and in some cases all, of the user's field of view.

The locators **120** are objects located in specific positions on the VR headset **105** relative to one another and relative to a specific reference point on the VR headset **105**. Each locator **120** provides a point on the VR headset **105** that may be identified by an external camera, such as the imaging device **135**, to determine the orientation and motion of the VR headset. A locator **120** may be a light emitting diode (LED), a corner cube reflector, a reflective marker, a type of light source that contrasts with an environment in which the VR headset **105** operates, or some combination thereof. In embodiments where the locators **120** are active (i.e., an LED or other type of light emitting device), the locators **120** may emit light in the visible band (~380 nm to 750 nm), in the infrared (IR) band (~750 nm to 1 mm), in the ultraviolet band (10 nm to 380 nm), some other portion of the electromagnetic spectrum, or some combination thereof.

In some embodiments, the locators are located beneath an outer surface of the VR headset **105**, which is transparent to the wavelengths of light emitted or reflected by the locators **120** or is thin enough to not substantially attenuate the wavelengths of light emitted or reflected by the locators **120**. Additionally, in some embodiments, the outer surface or other portions of the VR headset **105** are opaque in the visible band. Thus, the locators **120** may emit light in the IR band under an outer surface that is transparent in the IR band but opaque in the visible band.

A model of the VR headset **105** (such as a CAD model used to manufacture the headset) specifies the positions of the locators **120** on the headset **105**. Since each headset **105** ideally has locators **120** distributed in the same pattern, the positions of at least a subset of the locators **120** can be used during operation of the VR headset **105** to determine a position of the headset in space. However, the actual positions of the locators on the VR headset **105** may deviate from the model positions due to manufacturing tolerances. For this and other reasons, the actual locator positions may vary between different headsets **105**.

The IMU **130** is an electronic device that generates motion data based on measurement signals received from one or more of the sensors **125**. The motion data includes, for example, translational or rotational velocity and translational or rotational acceleration of the VR headset **105**. To generate the motion data, a sensor **125** generates one or more measurement signals in response to motion of the VR headset **105**, and may measure the absolute position or inertial movement of the sensor. Examples of the sensors **125** include: one or more accelerometers, one or more gyroscopes, one or more magnetometers, or any other suitable type of sensor, or some combination thereof. The sensors **125** may be located external to the IMU **130**, internal to the IMU **130**, or some combination thereof.

Based on the one or more measurement signals from one or more sensors **125**, the IMU **130** generates motion data indicating an estimated position of the VR headset **105**

relative to an initial position of the VR headset **105**. For example, the sensors **125** include multiple accelerometers to measure translational motion (forward/back, up/down, left/right) and multiple gyroscopes to measure rotational motion (e.g., pitch, yaw, roll). In some embodiments, the IMU **130** rapidly samples the measurement signals and calculates the estimated position of the VR headset **105** from the sampled data. For example, the IMU **130** integrates the measurement signals received from the accelerometers over time to estimate a velocity vector and integrates the velocity vector over time to determine an estimated position of a reference point (e.g., intermediate estimated position) on the VR headset **105**. Alternatively, the IMU **130** provides the sampled measurement signals to the VR console **110**, which determines the motion data. The reference point is a point that may be used to describe the position of the VR headset **105**. The reference point may generally be defined as a point in space; however, in practice, the reference point is defined as a point within the VR headset **105** (e.g., a center of the IMU **130**).

Like the locators **120**, the IMU **130** may vary between VR headsets **105** due to manufacturing tolerances. For example, different sensors **125** may output slightly different signals under the same conditions or the IMU **130** may be offset by small amounts from the headset model.

In one embodiment, the IMU **130** receives one or more calibration parameters from the memory **132** that compensate for differences between headsets **105**. As further discussed below, the calibration parameters are uniquely generated for each VR headset **105** and map the headset **105** to an ideal headset model, reducing error in determining positions and rates of movement of the headset **105**. Based on a received calibration parameter (e.g., IMU parameters), the IMU **130** may adjust its operation (e.g., change sample rate, etc.). In some embodiments, as further described below, certain calibration parameters cause the IMU **130** to offset an estimated position of the VR headset **105** to correct positional errors resulting from deviations of the headset **105** from the headset model.

The imaging device **135** generates position data in accordance with calibration parameters received from the VR console **110**. Position calibration data includes one or more images showing observed positions of the locators **120** that are detectable by the imaging device **135**. The imaging device **135** may include one or more cameras, one or more video cameras, any other device capable of capturing images including one or more of the locators **120**, or some combination thereof. Additionally, the imaging device **135** may include one or more filters (e.g., used to increase signal to noise ratio). The imaging device **135** is configured to detect light emitted or reflected from locators **120** in a field of view of the imaging device **135**. In embodiments where the locators **120** include passive elements (e.g., a retroreflector), the imaging device **135** may include a light source that illuminates some or all of the locators **120**, which reflect the light towards the light source in the imaging device **135**. Position calibration data is communicated from the imaging device **135** to the VR console **110**.

The VR input interface **140** is a device that allows a user to send action requests to the VR console **110**. An action request is a request to perform a particular action. For example, an action request may be to start or end an application or to perform a particular action within the application. The VR input interface **140** may include one or more input devices. Example input devices include: a keyboard, a mouse, a game controller, or any other suitable device for receiving action requests and communicating the

received action requests to the VR console **110**. An action request received by the VR input interface **140** is communicated to the VR console **110**, which performs an action corresponding to the action request. In some embodiments, the VR input interface **140** may provide haptic feedback to the user in accordance with instructions received from the VR console **110**. For example, haptic feedback is provided when an action request is received, or the VR console **110** communicates instructions to the VR input interface **140** causing the VR input interface **140** to generate haptic feedback when the VR console **110** performs an action.

The VR console **110** provides media to the VR headset **105** for presentation to the user in accordance with information received from one or more of: the imaging device **135**, the VR headset **105**, and the VR input interface **140**. In the example shown in FIG. 1, the VR console **110** includes an application store **145**, a tracking module **150**, and a virtual reality (VR) engine **155**. Some embodiments of the VR console **110** have different modules than those described in conjunction with FIG. 1. Similarly, the functions further described below may be distributed among components of the VR console **110** in a different manner than is described here.

The application store **145** stores one or more applications for execution by the VR console **110**. An application is a group of instructions that, when executed by a processor, generates media for presentation to the user. Media generated by an application may be in response to inputs received from the user via movement of the VR headset **105** or the VR interface device **140**. Examples of applications include: gaming applications, conferencing applications, video playback application, or other suitable applications.

The tracking module **150** tracks movements of the VR headset **105** using position data from the imaging device **135** and/or motion data received from the IMU **130**. In one embodiment, the tracking module **150** determines positions of a reference point of the VR headset **105** using observed locators from the position data, a model of the VR headset **105**, and calibration parameters of the locators. For example, the tracking module **150** observes positions of the locators in the position data. The observed locators are identified, and calibration parameters for the observed locators are retrieved from the memory **132** of the headset **105**. The tracking module **150** applies the calibration parameters to the observed positions to transform the observed positions to expected positions of the corresponding locators on the VR headset. The expected positions are then applied to the model of the VR headset **105** to determine the position of the reference point.

In one embodiment, the tracking module **150** also determines positions of a reference point of the VR headset **105** using the motion data. Additionally, in some embodiments, the tracking module **150** may use portions of the motion data, the position data, or some combination thereof, to predict a future location of the headset **105**. The tracking module **150** provides the estimated or predicted future position of the VR headset **105** to the VR engine **155**.

The VR engine **155** executes applications within the system environment and receives position information, acceleration information, velocity information, predicted future positions, or some combination thereof, of the VR headset **105** from the tracking module **150**. Based on the received information, the VR engine **155** determines media to provide to the VR headset **105** for presentation to the user. For example, if the received information indicates that the user has looked to the left, the VR engine **155** generates media for the VR headset **105** that mirrors the user's

movement in a virtual environment. Additionally, the VR engine 155 performs an action within an application executing on the VR console 110 in response to an action request received from the VR input interface 140 and provides feedback to the user that the action was performed. The provided feedback may be visual or audible feedback via the VR headset 105 or haptic feedback via the VR input interface 140.

FIG. 2A is a wire diagram of one embodiment of a virtual reality headset. The VR headset 200 is an embodiment of the VR headset 105 and includes a front rigid body 205 and a band 210. The front rigid body 205 includes the electronic display 115 (not shown), the IMU 130, the one or more sensors 125, and the locators 120. In the embodiment shown by FIG. 2A, the sensors 125 are located within the IMU 130, and neither the sensors 125 nor the IMU 130 are visible to the user.

The locators 120 are located in fixed positions on the front rigid body 205 relative to one another and relative to a reference point 215. The reference to locators 120 in FIG. 2A includes some of the locators 120 present on the headset, though additional locators 120 are present in this example. In the example of FIG. 2A, the reference point 215 is located at the center of the IMU 130. Each of the locators 120 emit light that is detectable by the imaging device 135. Locators 120, or portions of locators 120, are located on a front side 220A, a top side 220B, a bottom side 220C, a right side 220D, and a left side 220E of the front rigid body 205 in the example of FIG. 2A.

FIG. 2B is a wire diagram of an embodiment of a VR headset 225 including a front rigid body 205 and a rear rigid body 230. The VR headset 225 shown in FIG. 2B, is an embodiment of the VR headset 105 where the front rigid body 205 and the rear rigid body 230 are coupled together via the band 210. The band 210 is non-rigid (e.g., elastic), so the front rigid body 205 is not rigidly coupled to the rear rigid body 230. Thus, the rear rigid body 230 may move in relation to the front rigid body 205, and, specifically, move in relation to the reference point 215. In some embodiments, the rear rigid body 230 allows the VR console 110 to maintain tracking of the VR headset 105, even if the front rigid body 205 is not visible to the imaging device 135. Locators 120 on the rear rigid body 230 are located in fixed positions relative to one another and relative to the reference point 215 on the front rigid body 205. In the example of FIG. 2B, one or more locators 120, or portions of locators 120, on the rear rigid body 230 are located on a front side 235A, a top side 235B, a bottom side 235C, a right side 235D, and a left side 235E of the rear rigid body 230.

#### Virtual Reality Headset Calibration System

FIG. 3A is a schematic diagram illustrating a headset calibration system 300, according to one embodiment. In one embodiment, as shown in FIG. 3A, the headset calibration system 300 includes an imaging space 310 and a calibration controller 350 controlling operation of the headset calibration system 300. The imaging space 310 includes a plurality of cameras 315 and a support arm 320 supporting a VR headset 105. The support arm 320 and/or the cameras 315 move in predetermined manners while the cameras 315 image the VR headset 105. Based on the images captured by the cameras 315, the headset calibration system 300 generates calibration parameters for the VR headset 105 that are used during operation of the VR headset 105 to locate the headset in space and determine the headset's movement. These calibration parameters include parameters related to the positions of the locators, which compensate for differences between expected (or model) positions and actual

positions of the locators 120 of a headset 105. The calibration parameters also include parameters related to static and dynamic outputs of the IMU 130. For the static outputs, the calibration parameters represent differences between expected and actual signals output from the IMU 130 while the headset 105 is static. For the dynamic outputs, the calibration parameters represent differences between expected and actual signals output from the IMU 130 while the headset 105 is rotated or otherwise moved.

The support arm 320 is configured to attach to or otherwise support a VR headset 105 within the imaging space 310. In one embodiment, the support arm 320 includes clamps, screws, clips, or other fasteners to attach the VR headset 105 to the support arm 320. For example, a clamp connected to the support arm 320 clamps to the top side 220B and bottom side 220C of a VR headset 105, or clamps to a right side 220D and a left side 220E of the VR headset 105. In the example of FIG. 3A, the support arm 320 is attached to a back face of the headset 105, opposite the front face 220A. Alternatively, a top of the support arm 320 may have a cavity shaped to receive a VR headset 105 to support the headset, without the support arm 320 fastening to the headset. Furthermore, for embodiments of the headset 105 having both a front rigid body 205 and a rear rigid body 230, the support arm 320 may support the front rigid body 205 while a second support arm (not shown) supports the rear rigid body 230. The second support arm fixes a position of the rear rigid body 230 with respect to the front rigid body 205, enabling the headset calibration system 300 to also calibrate the positions of the locators 120 on the rear rigid body 230.

The support structures of the support arm 320 may be configured to support the VR headset 105 without occluding the locators 120. For example, the support arm 320 clamps to a portion of the headset 105 that does not include locators 120, so that the clamps do not block imaging of the locators 120. The support arm 320 may also support a cable configured to electronically couple the VR headset 105 to the calibration system 300. Via the cable, the headset calibration system 300 receives information from the VR headset 105, such as signals output from the IMU 130, and sends information to the VR headset 105, such as the calibration parameters generated by the calibration system 300.

An example headset support 350, which is coupled to the support arm 320 in the headset calibration system 300 to support the headset 105, is shown in FIG. 3B. In one embodiment, as illustrated in FIG. 3B, the headset support 350 includes front support structures 352A and 352B to support the front rigid body 205 of the headset 105. For example, a top of the front rigid body 205 rests on the support structure 352A, while a bottom of the front rigid body 205 rests on the support structure 352B. The band 210 of the headset 105 may be placed around a band support 354 to secure the headset 105 to the support 350. A clamp (not shown in FIG. 3B) may clamp to the inside of the front rigid body 205 to further secure the headset 105 to the support 350.

In one embodiment, the support arm 320 is coupled to actuators configured to move the support arm 320 and attached VR headset 105 in one or more predetermined manners within the headset calibration system 300. Moving the headset 105 in a predetermined manner enables the headset calibration system 300 to reliably compare actual positions of the locators 120 to expected locator positions and compare actual IMU 130 outputs to expected outputs. Given accurate comparisons between these values, the headset calibration system 300 can generate calibration param-

eters that improve the accuracy of the tracking module 150 when tracking a headset 105 in use. To calibrate positions of the locators 120 of a VR headset 105, the actuators move the support arm 320 along a fixed path 325. FIG. 3A illustrates one embodiment of the fixed path 325 being a circular path, but the actuators may move the support arm 320 along a path of any shape and oriented in any manner with respect to the cameras 315. For example, the path may move the headset 105 along a circular shape on a plane parallel to, perpendicular to, or at another angle to the imaging plane of the cameras 315, or along a path of any other shape. The path may move the headset 105 to provide the cameras a variety of perspectives and different views of the VR headset 105 and the locators 120. Thus, the path may rotate, turn, and otherwise move the VR headset 105 to different positions along the path. The actuators move the support arm 320 at a specified rate along the fixed path. To calibrate the IMU 130, the actuators rotate the headset 105 around one or more axes at a specified rate.

The cameras 315 capture images of the headset 105 while the headset is in the imaging space 310. The cameras 315 are configured such that the locators 120 are visible in the captured images, and therefore the cameras 315 may image in the visible, infrared, or ultraviolet spectra depending on the type of locators 120 used in the headset 105. FIG. 3A illustrates four cameras 315 positioned at corners and pointed toward a center of the imaging space 310. However, in other embodiments, the headset calibration system 300 may include additional or fewer cameras, and the cameras 315 may be located at different positions. For example, the cameras 315 and headset 105 may be approximately aligned on a common horizontal plane. Alternatively, the headset calibration system 300 may instead include cameras positioned above and below the headset 105 when the headset 105 is supported by the support arm 320. In one embodiment, the cameras 315 are positioned in the imaging space 310 to minimize imaging error for the path 325. For example, the cameras 315 are positioned such that any position along the path 325 is located within an overlap of fields of view of at least two of the cameras. Furthermore, in one embodiment, the cameras 315 are coupled to actuators to move the cameras 315 in a predetermined manner relative to the support arm 320. Based on the images captured by the cameras, the headset calibration system 300 determines actual positions of the locators 120 relative to expected positions and determines actual outputs from the IMU 130 relative to expected outputs.

The calibration controller 350, which is a computing device comprising a processor and a memory, controls the actuators of the support arm 320 and the cameras 315 to move the headset 105 in the predetermined manner and captured images of the headset. Using the images captured by the cameras 315, the calibration controller 350 generates calibration parameters and stores the calibration parameters to the memory 132 of the headset 105.

FIG. 4 is a block diagram of the calibration controller 350, according to one embodiment. In one embodiment, the calibration controller 350 includes an imaging module 405, a positioning module 410, a headset calibrator 415, and a communication module 420. Other embodiments of the calibration controller 350 may include additional, fewer, or different modules, and the functions may be performed by different modules.

The imaging module 405 drives actuators to move the support arm 320 and/or the cameras 315 in a predetermined manner. While the headset 105 and/or cameras 315 are moved, the imaging module 405 controls the cameras 315 to

capture images of the headset 105. In one embodiment, as described below, the imaging module 405 controls the actuators and the cameras 315 differently for calibrating the positions of the locators 120 and the outputs of the IMU 130.

The positioning module 410 uses the images captured by the imaging module 405 to triangulate positions of the locators 120 in the imaging space 310. FIG. 5 illustrates an example of the triangulation process performed by the positioning module 410. As shown in FIG. 5, two or more of the cameras 315, such as cameras 315C and 315D, capture an image of the headset 105. Generally, the positioning module 410 uses known geometry of the cameras 315 with respect to the headset 105 when an image is captured to determine the positions of the locators 120 in the imaging space 310 and translate the positions in the imaging space to actual positions of the locators 120 on the headset 105. More specifically, the positioning module 410 identifies a position of a locator 120 in the images captured by two or more of the cameras 315. The positioning module 410 also determines the geometry of the cameras 315, including distances of the cameras 315 from the headset 105 and angles between the cameras 315 and the headset 105, at the time the images were captured. The camera geometry for each set of captured images may be predetermined and provided to the positioning module 405, or the positioning module 405 may determine the camera geometry based on time stamps of the images and the predetermined movement of the cameras 315 and/or the support arm 320. Using the camera geometry and the position of a locator 120 in the captured images, the positioning module 405 determines the actual position of the locator 120 on the headset 105.

In one embodiment, the positioning module 410 also uses parameters of the cameras 315 when determining the positions of the locators 120. These parameters include, for example, focal length, focus, offset of an imaging sensor with respect to the center of the lens of each camera 315, or lens distortion parameters. For example, the cameras 315 each have a field of view 502, corresponding to a portion of the headset 105 the camera captures in a given image. Lenses of the cameras 315 distort the captured images, and the distortion is greater near edges of the field of view 502 than near a center of the field of view. That is, the camera distortion introduces an error into the measurement of the actual positions of the locators 120, where the error is greater near the edges of the field of vision 502 than near the center. The positioning module 410 may use the camera distortions when determining the positions of the locators 120 by adjusting the locators' observed positions to compensate for the camera distortion.

As described above, the cameras 315 capture a plurality of images while the headset 105 and/or cameras 315 are moved in a predetermined manner. Accordingly, a given locator 120 may appear in multiple sets of images captured by the cameras 315, where a set of images represents the images simultaneously captured by the plurality of cameras 315. In one embodiment, the positioning module 410 triangulates the position of a locator 120 using any sets of images in which the locator 120 appears in two or more of the images. In another embodiment, the positioning module 410 selects one or more sets of images to use to determine the position of a locator 120. For example, the positioning module 410 selects a set of images to use for positioning a locator 120 in which the locator 120 is positioned closest to centers of the fields of vision of the cameras 315. Alternatively, the positioning module 410 uses a set of images to position any locators 120 falling within the fields of vision of the cameras 315. For example, in FIG. 5, the locators

120A and 120B are positioned in the region of overlapping fields of view 502 of the cameras 315C and 315D, while the locators 120C and 120D are positioned outside the overlapping region. The positioning module 410 therefore uses the images captured in FIG. 5 to triangulate the positions of the locators 120A and 120B, but does not use the images to triangulate the positions of the locators 120C and 120D.

Returning to FIG. 4, the headset calibrator 415 generates calibration parameters for the headset 105. Calibration parameters for a headset 105 describe differences between expected positions and the actual positions of the locators 120 and differences between expected outputs and actual outputs of the IMU 130. For calibrating the positions of the locators 120, the headset calibrator 415 determines distances between the actual positions of the locators 120 (as determined by the positioning module 410) and the expected positions of the locators 120 (as specified by a model of the headset 105). In particular, the headset calibrator 415 applies a non-linear least squares solver to the actual positions of the locators 120 in selected images to determine the deviation of the actual position of the locator 120 from the expected position.

FIGS. 6A-6B illustrate different embodiments for specifying the distance between actual and expected positions of locators 120. In FIG. 6A, the actual position 600 of a locator 120 is specified by a distance 602 from the reference point 215 and an angle 604 from a positive horizontal axis 606 originating at the reference point 215. Similarly, the expected position 610 of the locator is specified by a distance 612 from the reference point 215 and an angle from the positive horizontal axis. In the embodiment of FIG. 6A, the calibration parameters are a vector transformation that, when applied to the distance 612 and angle associated with the expected position 610, outputs the distance 602 and angle 604 associated with the actual position 600. The actual and expected positions of a locator 120 may alternatively be expressed using a rectangular coordinate system or coordinate systems centered at positions on the headset 105 other than the reference point 215. In another embodiment, as shown in FIG. 6B, the calibration parameter for the locator 120 is a vector 622 specifying the actual position 600 of the locator as a distance and angle from the expected position 610. The headset calibrator 415 may alternatively express the actual position of a locator relative to the expected position by any other suitable method.

To calibrate the signals output from the IMU 130, the headset calibrator 415 calculates expected outputs from the IMU 130 and generates calibration parameters that relate the expected outputs to the actual output of the IMU 130. The headset calibrator 415 determines the expected outputs using images of the headset 105 and the calibration parameters for the locators 120. Based on the images, the headset calibrator 415 calculates actual orientations and rates of movement of the headset 105, and determines the IMU signals that would correspond to the calculated orientations and movements. These expected IMU 130 signals are compared to the actual signals output by the IMU 130 to generate the calibration parameters.

The communication module 420 communicates with the VR headset 105 to receive data from the headset 105, such as output signals from the IMU 130, and communicate data to the headset 105, such as the calibration parameters generated for the headset 105. The communication module 420 stores the generated calibration parameters to the memory 132 of the headset for use during operation of the VR system 100.

Calibrating a Virtual Reality Headset

FIG. 7 is a flowchart illustrating a process for calibrating a VR headset 105, according to one embodiment. In one embodiment, the steps of the process are performed by the headset calibration system 300. Other embodiments may include additional, fewer, or different steps, and the steps may be performed in different orders.

To calibrate a headset 105, the headset calibration system 300 captures 702 a plurality of images of the headset 105 while the headset 105 is moved along a predetermined path. The images are captured by a plurality of cameras 315 imaging the predetermined path. In one embodiment, the headset 105 is attached to a support arm 320, and actuators move the support arm 320 and attached headset 105 along the predetermined path. Moving the headset 105 along the path enables the headset calibration system 300 to capture images of all locators 120 of the headset 105, regardless of the position of the locators on the headset. Accordingly, the path may be configured in any shape providing the cameras 315 with direct paths for imaging various sides of the headset 105. In addition to or instead of moving the headset 105, the cameras 315 may be moved in a predetermined manner to image the headset 105. When capturing 702 the images, the headset calibration system 300 may capture images of the headset 105 at regular intervals while the headset is continuously moved, where the relative position of the headset 105 to the cameras 315 in each captured image may be determined using a known rate of movement of the headset 105 and a duration of the intervals. Alternatively, the headset calibration system 300 moves the headset 105 to a predetermined position on the path and pauses the motion while the cameras 315 each capture one or more images of the headset. The headset 105 is then moved to a next specified position and imaged.

Using the captured images, the headset calibration system 300 determines 704 actual positions of locators 120 of the headset 105. The headset calibration system 300 determines positions of one or more locators in each of the images of the headset 105. Based on the positions of the locators in a set of at least two images captured at substantially the same time (that is, while the headset 105 is located at a given position on the path), the headset calibration system 300 determines the positions of the locators 120 in the imaging space 310. In one embodiment, the headset calibration system 300 selects the sets of images to use for positioning each locator 120 based the relative position of each locator 120 with respect to the fields of view of the cameras or based on any other relevant factors. Based on the position of the headset 105 in the imaging space 310 and the determined positions of the locators 120 in the space, the headset calibration system 300 computes the actual positions of the locators on the headset 105.

The headset calibration system 300 generates 706 calibration parameters relating the actual positions of the locators 120 to expected positions of the locators 120. In one embodiment, the calibration parameters for the locators are vector transformations that enable the imaging system 135 to convert the detected positions of each locator 120 in an imaged space to the expected positions of the locators 120 while the headset 105 is in use. Thus, for each of a plurality of the locators 120, the headset calibration system 300 compares the actual position of the locator, detected by imaging and triangulation, to the expected position of the locator, specified by a model of the headset 105. Based on the comparison, the headset calibration system 300 generates a vector transformation that when applied to the actual position of the locator yields the expected position of the locator.

13

In one embodiment, the headset calibration system 300 performs two calibration processes for the IMU 130: one that is based on static orientations of the headset 105, and one that is based on dynamic movement of the headset 105. For example, the static calibration is used to calibrate signals output by an accelerometer of the IMU 130, while the dynamic calibration is used to calibrate signals output by a gyroscope of the IMU 130. To perform a static calibration of the IMU 130, the headset calibration system 300 positions the headset 105 in a plurality of orientations and captures 708 a plurality of images of the headset 105 while the headset 105 is in each of the orientations. In one embodiment, the headset 105 is moved to a variety of orientations expected to yield IMU 130 signals with a wide range of magnitudes.

FIGS. 8A-C illustrate three example orientations. In FIG. 8A, the headset 105 is positioned horizontally with respect to gravity (e.g., such that a magnitude of a z-axis accelerometer signal is expected to be large while x- and y-axis accelerometer signals are expected to be zero). In FIG. 8B, the headset 105 has been rotated around the y-axis to an orientation expected to yield approximately equivalent, positive magnitude x- and z-axis accelerometer signals and y-axis accelerometer signal of approximately zero magnitude. In FIG. 8C, the headset 105 has been rotated further around the y-axis to an orientation expected to yield an x-axis signal with a high magnitude and y- and z-axis accelerometer signals approximately equal to zero. The headset 105 may be similarly moved to orientations yielding negative magnitude x-axis and z-axis accelerometer signals and positive and negative magnitude y-axis signals. While the headset 105 is imaged, the headset calibration system 300 receives 710 and stores magnitudes of signals output by the sensors 125 of the IMU 130.

The headset calibration system 300 calculates 712 expected outputs from the IMU 130 for each of the orientations of the headset 105. To identify each orientation, the headset calibration system 300 determines the positions of the locators in the images of the orientation captured by the cameras 315. The headset calibration system 300 matches each locator in the images to a locator in the headset model using the calibration parameters, and then determines the orientation of the headset model that would result in the positions of the locators in the images. Once the orientation of the headset 105 is determined, the headset calibration system 300 determines the expected accelerometer outputs (e.g., an expected magnitude of the signal from each accelerometer channel) for the orientation. Because the positions of the locators 120 for the specific headset 105 are calibrated, the headset calibration system 300 does not need to use the driving of the actuators to determine the orientation of the headset 105 at a given moment.

The headset calibration system 300 also calculates 714 the orientations of the headset 105 based on the actual output signals received from the IMU 130 for each orientation of the headset 105. For example, the headset calibration system 300 determines the orientation of the headset 105 based on the magnitudes of the signal from each accelerometer channel. The headset calibration system 300 uses the magnitudes to determine angles between the accelerometer channels, which in turn correspond to angles between the headset 105 and the axes.

The headset calibration system 300 compares the actual signals output from the IMU 130 to the expected signals by comparing the actual orientations of the headset 105 (calculated using the images of the headset 105) to the expected orientations of the headset 105 (calculated based on the

14

output signals in each orientation). Based on the comparison, the headset calibration system 300 generates 716 calibration parameters relating the actual signal outputs to the expected signal outputs. The calibration parameters for the static IMU 130 signals represent one- or greater-dimensional vector transforms that can be applied to actual signals output by the IMU 130 to yield the expected signals. In one embodiment, the headset calibration system 300 generates a calibration parameter for each accelerometer channel that represents a scaling factor that can be applied to signals from the channel to determine the expected signals from the channel (i.e., a one-dimensional vector transform). In another embodiment, the headset calibration system 300 generates one or more calibration parameters to be applied to multi-dimensional accelerometer signals to determine corresponding expected signals (e.g., a multi-dimensional vector transform). To generate these vector transforms, the headset calibration system 300 may average the differences between the expected and actual IMU signals determined for each of the plurality of orientations (e.g., generated a single calibration parameter for each accelerometer channel). Alternatively, the headset calibration system 300 may generate multiple calibration parameters for the IMU 130, each corresponding to a range of orientations of the headset 105. For example, if the maximum expected magnitude of the x-axis accelerometer signal is  $X_{max}$  (e.g., the magnitude when the x-axis accelerometer is parallel to the direction of gravity), the headset calibration system 300 generates a first calibration parameter to be used when the x-axis signal has magnitudes between zero and  $X_{max}/2$ , and a second calibration parameter to be used for magnitudes greater than  $X_{max}/2$ .

To perform a dynamic calibration of the IMU 130, the headset calibration system 300 rotates the headset 105 around one or more axes and captures 718 a plurality of images of the headset 105 while the headset is rotated. In one embodiment, the headset 105 is rotated at a fixed rate by the actuators coupled to the support arm. FIG. 9 illustrates an example rotation of the headset 105 around the y-axis (e.g., pitch). The headset 105 may be similarly rotated around the x-axis (e.g., roll) and z-axis (e.g., yaw). While the headset 105 is imaged, the headset calibration system 300 receives 720 and stores signals output by the IMU 130.

The headset calibration system 300 calculates 722 expected outputs from the IMU 130 for the rotations of the headset 105. To calculate the expected outputs, the headset calibration system 300 determines positions of the locators 120 in images captured by the cameras 315 and adjusts the determined positions based on the calibration parameters of the locators 120. Using the adjusted locator positions and the headset model, the headset calibration system 300 determines orientations of the headset 105 in space and a time at which the headset 105 is in each orientation. The headset calibration system 300 then calculates the rate of rotation using the orientation and time data. Expected outputs from the IMU 130 for the calculated rotation rate are then determined. A similar process is used to determine the rate of each rotation of the headset 105 (e.g., clockwise and counter-clockwise rotations around each of the x-, y-, and z-axes). Similarly to the static calibration of the IMU 130, the rate of rotation of the headset 105 is determined based on the imaging of the headset 105 and the calibration parameters for the locators 120. As such, the headset calibration system 300 does not need to rely upon known driving of the actuators to determine the rate of the headset's rotation.

The headset calibration system also calculates 724 the rate of yaw, pitch, or roll of the headset 105 based on the actual



15

output signals received from the IMU 130. For example, the headset calibration system 300 determines the rate of rotation around a given axis based on the magnitude of a corresponding gyroscope signal while the headset 105 is rotated. Alternatively, the headset calibration system 300

determines the rate of rotation using accelerometer signals. Based on the rate of rotation calculated using the images and the rate of rotation calculated using the actual IMU signals, the headset calibration system 300 determines a difference between the expected IMU 130 signals and the actual signals. For example, the headset calibration system 300 determines a difference between the calculated rotation rates. The headset calibration system 300 then generates 726 one or more dynamic calibration parameters based on the determined difference. In one embodiment, the dynamic calibration parameters include a parameter corresponding to a rotation around each of the three primary axes of the headset 105. Each dynamic calibration parameter represents a transformation that, when applied to a signal output by the IMU 130 while the headset 105 is rotated around the corresponding axis, yields the corresponding expected output signal. An accurate rate of rotation of the headset 105 can then be determined based on the expected output signal.

The headset calibration system 300 stores 728 the calibration parameters for the locators and the static and dynamic IMU calibration parameters to the memory 132 of the headset 105. During operation of the headset 105, the VR console 110 and/or the IMU 130 retrieve the calibration parameters from the memory 132 and use the parameters to accurately track movements of the headset 105. For example, the VR console 110 uses the locator calibration parameters to determine positions of the locators in space based on images captured by the imaging device 135. As another example, one embodiment of the IMU 130 uses the static and dynamic IMU calibration parameters to correct errors in estimates of the position of the headset 105. The VR console 110 may alternatively use the IMU calibration parameters to determine positions and rates of movement of the headset 105.

#### SUMMARY

The foregoing description of the embodiments of the disclosure has been presented for the purpose of illustration; it is not intended to be exhaustive or to limit the disclosure to the precise forms disclosed. Persons skilled in the relevant art can appreciate that many modifications and variations are possible in light of the above disclosure.

The foregoing description of the embodiments of the disclosure has been presented for the purpose of illustration; it is not intended to be exhaustive or to limit the disclosure to the precise forms disclosed. Persons skilled in the relevant art can appreciate that many modifications and variations are possible in light of the above disclosure.

Some portions of this description describe the embodiments of the disclosure in terms of algorithms and symbolic representations of operations on information. These algorithmic descriptions and representations are commonly used by those skilled in the data processing arts to convey the substance of their work effectively to others skilled in the art. These operations, while described functionally, computationally, or logically, are understood to be implemented by computer programs or equivalent electrical circuits, microcode, or the like. Furthermore, it has also proven convenient at times, to refer to these arrangements of operations as modules, without loss of generality. The described opera-

16

tions and their associated modules may be embodied in software, firmware, hardware, or any combinations thereof.

Any of the steps, operations, or processes described herein may be performed or implemented with one or more hardware or software modules, alone or in combination with other devices. In one embodiment, a software module is implemented with a computer program product comprising a computer-readable medium containing computer program code, which can be executed by a computer processor for performing any or all of the steps, operations, or processes described.

Embodiments of the disclosure may also relate to an apparatus for performing the operations herein. This apparatus may be specially constructed for the required purposes, and/or it may comprise a general-purpose computing device selectively activated or reconfigured by a computer program stored in the computer. Such a computer program may be stored in a non-transitory, tangible computer readable storage medium, or any type of media suitable for storing electronic instructions, which may be coupled to a computer system bus. Furthermore, any computing systems referred to in the specification may include a single processor or may be architectures employing multiple processor designs for increased computing capability.

Embodiments of the disclosure may also relate to a product that is produced by a computing process described herein. Such a product may comprise information resulting from a computing process, where the information is stored on a non-transitory, tangible computer readable storage medium and may include any embodiment of a computer program product or other data combination described herein.

Finally, the language used in the specification has been principally selected for readability and instructional purposes, and it may not have been selected to delineate or circumscribe the inventive subject matter. It is therefore intended that the scope of the disclosure be limited not by this detailed description, but rather by any claims that issue on an application based hereon. Accordingly, the disclosure of the embodiments is intended to be illustrative, but not limiting, of the scope of the disclosure, which is set forth in the following claims.

What is claimed is:

1. A method comprising:

- accessing a memory that stores a set of expected positions of a plurality of locators on a virtual reality (VR) headset;
- capturing a plurality of images of the VR headset in a plurality of positions as the VR headset is moved along a predetermined path through a space imaged by a plurality of cameras, the captured images detecting actual positions of the plurality of locators on the VR headset;
- using images captured at each position of the VR headset:
  - identifying the respective position of the VR headset in the space;
  - determining positions of at least a subset of the locators in the space based on the images;
  - computing a difference between an actual position of each locator in the subset on the VR headset and the expected position of the respective locator based on the determined position of the locator in the space and the identified position of the VR headset;
- generating calibration parameters for the plurality of locators based on the computed differences; and
- storing the calibration parameters for the plurality of locators to the VR headset, the calibration parameters

17

usable to identify positions and motion of the VR headset during use of the VR headset.

2. The method of claim 1, wherein determining the positions of the subset of locators in the space comprises, for a locator of the subset:

triangulating the position in the space of the locator using at least one image captured simultaneously by two or more of the cameras; and

determining the actual position of the locator based on the triangulated position of the locator in the space and the identified position of the VR headset.

3. The method of claim 1, wherein the calibration parameters for the plurality of locators comprise a calibration parameter representing a transformation that when applied to a position of a locator in the space yields the expected position of the respective locator on the VR headset.

4. The method of claim 1, wherein the VR headset further comprises an inertial measurement unit (IMU) generating output signals indicative of motion of the VR headset, the method further comprising:

generating calibration parameters for the IMU based on the calibration parameters for the plurality of locators and differences between expected signals output by the IMU and actual signals output by the IMU; and

storing the calibration parameters for the IMU to the VR headset, the calibration parameters for the IMU usable to identify motion of the VR headset during use of the VR headset.

5. The method of claim 4, further comprising: capturing a second plurality of images of the VR headset while the VR headset is moved in one or more predetermined manners; and

determining positions of the VR headset in the space using the second plurality of images.

6. The method of claim 5, wherein the one or more predetermined manners of movement comprise a rotation of the VR headset to each of a plurality of orientations in the space, and wherein generating the calibration parameters for the IMU comprises:

identifying the orientations of the VR headset based on the captured images and the calibration parameters for the plurality of locators;

receiving the actual signals output by the IMU at each of the plurality of orientations of the VR headset;

determining the expected IMU signals based on the identified orientations; and

identifying for each of the orientations, the difference between the actual signals output from the IMU at the orientation and the expected signals.

7. The method of claim 6, wherein identifying the orientations of the VR headset comprises, for an orientation of the VR headset:

determining positions of a plurality of the locators of the VR headset in the space using at least one of the captured images;

translating the determined positions of the locators in the space to the expected positions of the corresponding locators based on the calibration parameters; and

determining the orientation based on the expected positions.

8. The method of claim 6, wherein the calibration parameters for the IMU comprise a calibration parameter representing a transformation that when applied to an actual signal output by the IMU yields an expected signal.

9. The method of claim 5, wherein the one or more predetermined manners of movement comprises rotating the

18

VR headset around one or more axes of the VR headset, and wherein generating the calibration parameters for the IMU comprises:

receiving actual signals output by the IMU while the VR headset is rotated;

calculating a rate of rotation of the IMU around each of the one or more axes based on the second plurality of captured images and the calibration parameters for the plurality of locators;

determining the expected IMU signals based on the calculated rates of rotation; and

identifying for the rotation around each of the one or more axes, the difference between the actual signals and the expected signals.

10. A system comprising:

a plurality of cameras;

an imaging space imaged by the plurality of cameras; a support arm configured to couple to a virtual reality (VR) headset and move the VR headset along a predetermined path within the imaging space, the VR headset including a plurality of locators; and

a calibration controller configured to:

accessing a memory that stores a set of expected positions of each of the locators on the VR headset;

control the cameras to capture a plurality of images of the VR headset in each of a plurality of positions while the VR headset is moved along the predetermined path, the captured images detecting actual positions of the plurality of locators on the VR headset;

using images captured at each position of the VR headset:

identify the respective position of the VR headset in the space;

determine positions of at least a subset of the locators in the space based on the images;

compute a difference between an actual position of each locator in the subset on the VR headset and the expected position of the respective locator based on the determined position of the locator in the space and the identified position of the VR headset;

generate calibration parameters for the plurality of locators based on the computed differences; and store the calibration parameters for the plurality of locators to the VR headset, the calibration parameters usable to identify positions of the VR headset during use of the VR headset.

11. The system of claim 10, wherein the calibration controller is configured to determine the positions of the subset of locators in the space by, for a locator of the subset: triangulating the position in the space of the locator using at least one image captured simultaneously by two or more of the cameras; and

determining the actual position of the locator based on the triangulated position of the locator in the space and the identified position of the VR headset.

12. The system of claim 10, wherein the calibration parameters for the plurality of locators comprise a calibration parameter representing a transformation that when applied to a position of a locator in the space yields the expected position of the respective locator on the VR headset.

13. The system of claim 10, wherein the VR headset further comprises an inertial measurement unit (IMU) gen-

19

erating output signals indicative of motion of the VR headset, and wherein the calibration controller is further configured to:

generate calibration parameters for the IMU based on the calibration parameters for the plurality of locators and differences between expected signals output by the IMU and actual signals output by the IMU; and store the calibration parameters for the IMU to the VR headset, the calibration parameters for the IMU usable to identify motion of the VR headset during use of the VR headset.

14. The system of claim 13, wherein the calibration controller is further configured to:

control the cameras to capture a second plurality of images of the VR headset while the VR headset is moved in one or more predetermined manners; and determine positions of the VR headset in the space using the second plurality of images.

15. The system of claim 13, wherein the one or more predetermined manners of movement comprise a rotation of the VR headset to each of a plurality of orientations in the space, and wherein the calibration controller is configured to generate the calibration parameters for the IMU by:

identifying the orientations of the VR headset based on the captured images and the calibration parameters for the plurality of locators; receiving the actual signals output by the IMU at each of the plurality of orientations of the VR headset; determining the expected IMU signals based on the identified orientations; and identifying for each of the orientations, the difference between the actual signals output from the IMU at the orientation and the expected signals.

16. The system of claim 15, wherein the calibration controller is configured to identify the orientations of the VR headset by:

20

determining, for an orientation of the VR headset, positions of a plurality of the locators of the VR headset in the space using at least one of the captured images; translating the determined positions of the locators in the space to the expected positions of the corresponding locators based on the calibration parameters; and determining the orientation based on the expected positions.

17. The system of claim 13, wherein the calibration parameters for the IMU comprise a calibration parameter representing a transformation that when applied to an actual signal output by the IMU yields an expected signal.

18. The system of claim 13, wherein the one or more predetermined manners of movement comprises rotating the VR headset around one or more axes of the VR headset, and wherein generating the calibration parameters for the IMU comprises:

receiving actual signals output by the IMU while the VR headset is rotated; calculating a rate of rotation of the IMU around each of the one or more axes based on the second plurality of captured images and the calibration parameters for the plurality of locators; determining the expected IMU signals based on the calculated rates of rotation; and identifying for the rotation around each of the one or more axes, the difference between the actual signals and the expected signals.

19. The system of claim 10, wherein the plurality of cameras each has a field of view, and wherein the imaging space comprises regions of overlap of the fields of view of at least two of the cameras.

20. The system of claim 10, wherein the support arm couples to the VR headset without occluding the locators.

\* \* \* \* \*