



US 20170192232A1

(19) **United States**

(12) **Patent Application Publication**

Katz et al.

(10) **Pub. No.: US 2017/0192232 A1**

(43) **Pub. Date: Jul. 6, 2017**

(54) **NON-OVERLAPPED STEREO IMAGING FOR VIRTUAL REALITY HEADSET TRACKING**

(52) **U.S. Cl.**

CPC **G02B 27/017** (2013.01); **G06F 3/005** (2013.01); **G06T 19/006** (2013.01); **G06T 2219/2004** (2013.01)

(71) Applicant: **Oculus VR, LLC**, Menlo Park, CA (US)

(57) **ABSTRACT**

(72) Inventors: **Dov Katz**, Irvine, CA (US); **Oskar Linde**, Belmont, CA (US); **Kjell Erik Alexander Sjöholm**, San Francisco, CA (US); **Rasmus Karl Emil Simander**, San Francisco, CA (US)

A virtual reality (VR) headset includes a first camera and a second camera capturing image data of an environment of the VR headset. Each camera has a field of view, and a portion of the fields of view of the first and second cameras overlap while a portion of the fields of view do not overlap. A processor receiving the image data from the first and second cameras is configured to identify a first observation of a position of the VR headset in the environment and positions of a plurality of features based on the image data captured by the first camera. The processor also identifies a second observation of the position of the VR headset in the environment and the positions of the features based on the image data captured by the second camera. Based on the first and second observations, the processor determines a model of the environment.

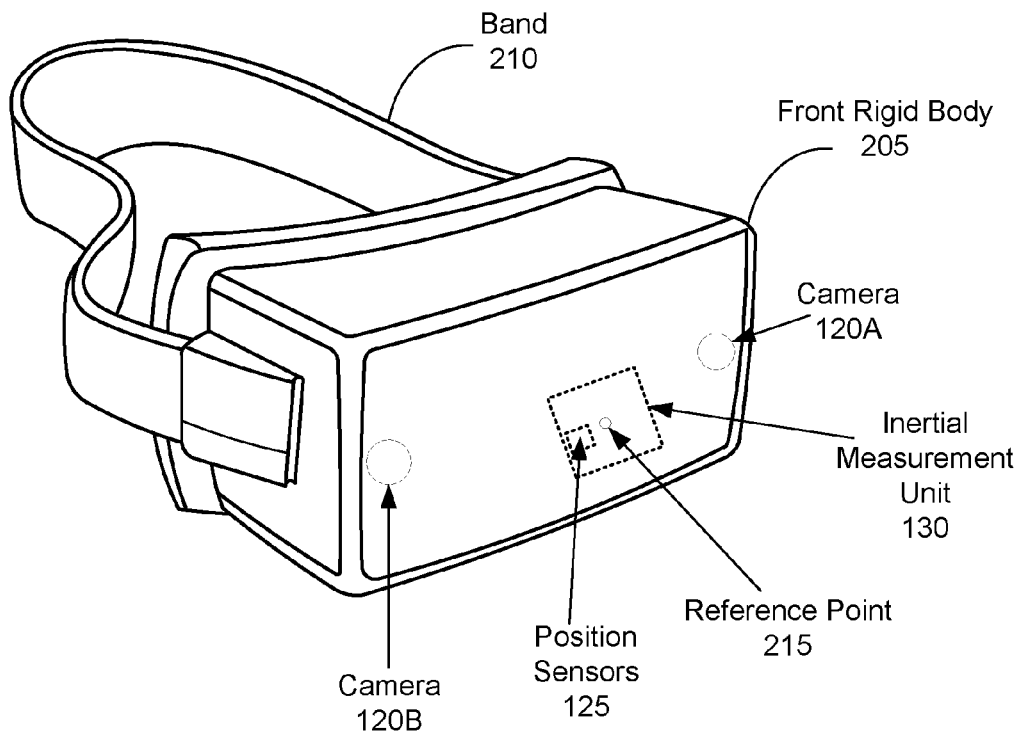
(21) Appl. No.: **14/986,645**

(22) Filed: **Jan. 1, 2016**

Publication Classification

(51) **Int. Cl.**
G02B 27/01 (2006.01)
G06T 19/00 (2006.01)
G06F 3/00 (2006.01)

200



100

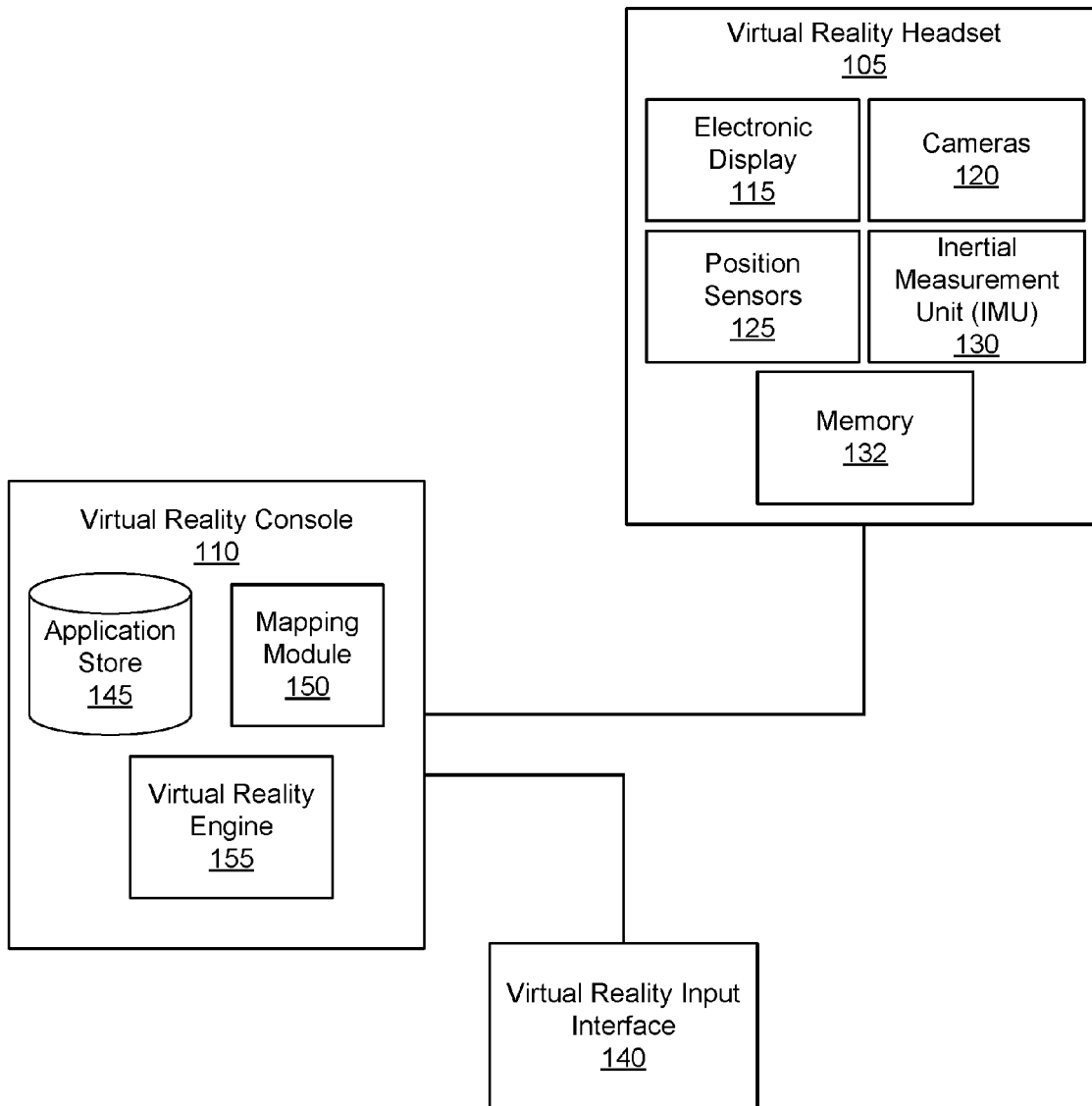


FIG. 1

200

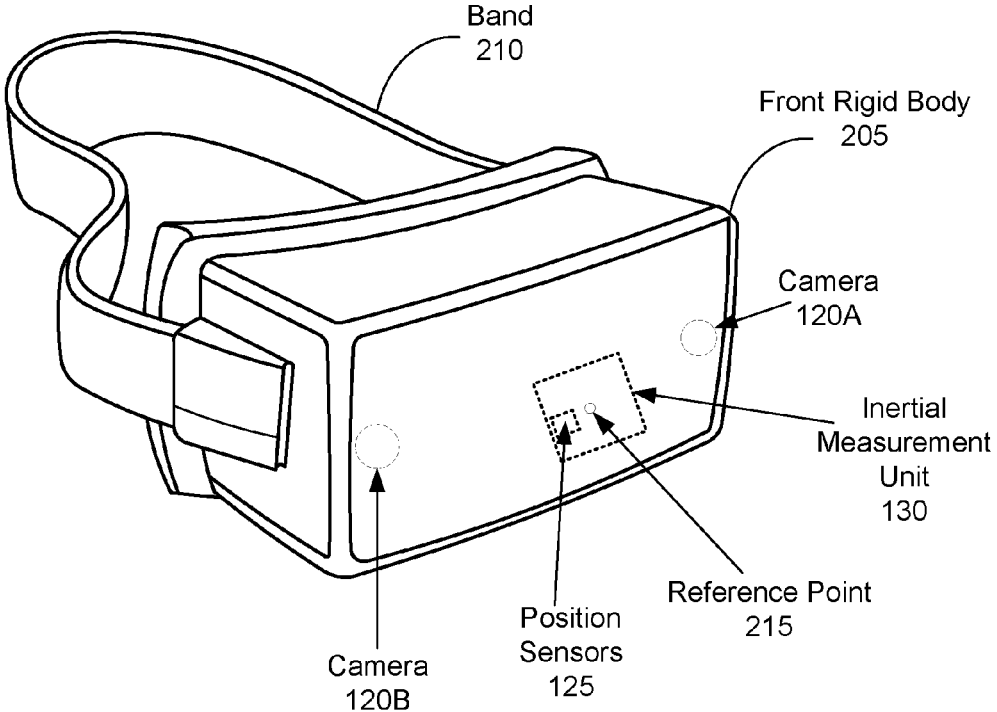


FIG. 2

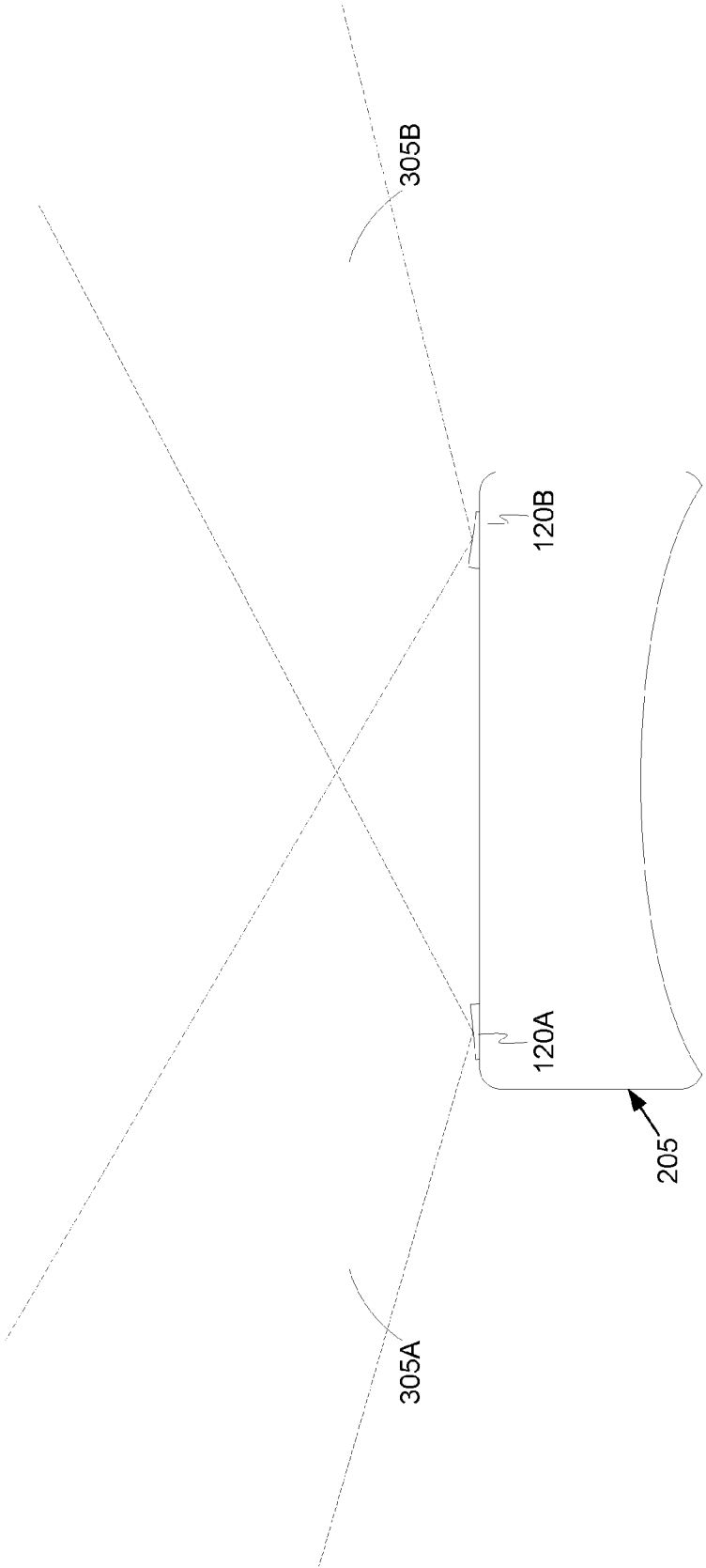


FIG. 3

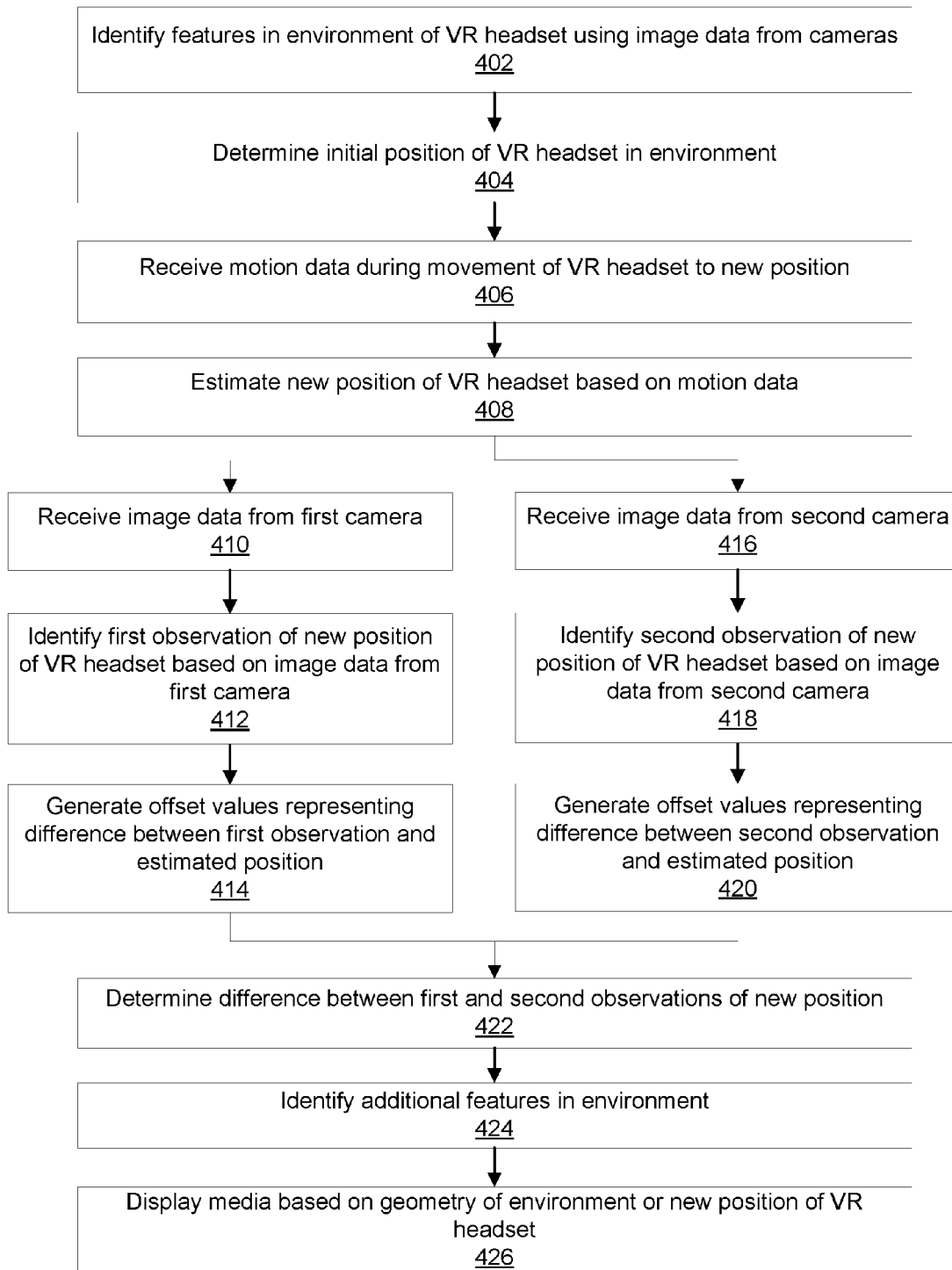


FIG. 4

NON-OVERLAPPED STEREO IMAGING FOR VIRTUAL REALITY HEADSET TRACKING

BACKGROUND

[0001] The present disclosure generally relates to virtual reality systems, and more specifically relates to mapping an environment in which a virtual reality system is used.

[0002] Virtual reality (VR) devices deliver media to users based at least in part on the position and movement of a headset worn by a user. Some VR devices deliver media augmenting or interacting with an environment in which the user is using the headset, or influenced by objects or features in the environment. For example, the VR device may display media to the user that includes virtual objects placed within the user's environment. To display media based on the user's environment, these VR devices often include a camera that maps out features in the environment. However, using a single camera to map features in the environment does not provide enough information to accurately identify the features in the environment or permit the determination of scale of those features. Likewise, there may not be enough information to determine the position of the VR headset relative to the features. Thus, the media presented by these systems may not accurately follow the actual position of the VR headset.

SUMMARY

[0003] A virtual reality (VR) system uses two or more cameras mounted on a virtual reality headset worn by a user to map an environment in which the headset is used and present media to the user based at least in part on the environment. The two or more cameras capture image data of the environment, and each has a field of view corresponding to an angle of the environment visible to the imaging electronics of the camera. A portion of the fields of view of the cameras overlap, while a portion of the fields of view do not overlap. The portion that does not overlap increases the area of the environment that can be imaged by the cameras, while the overlapping portions enables correlation of the image data to improve the accuracy of the environment's mapping and provide a scale for the objects in the environment.

[0004] A processor in the VR headset or in a system external to the headset receives the image data from the cameras. The processor uses the image data captured by the first camera to identify a first observation of a position of the VR headset in the environment and positions of a plurality of features in the environment. The features in the environment may include, for example, lines, corners, or edges detected in the image data captured by the first camera. The processor similarly uses the image data captured by the second camera to identify a second observation of the position of the VR headset in the environment and positions of the features. Based on the first observation and the second observation, the processor generates a three-dimensional model of the environment. The three-dimensional model of the environment includes a geometry of the environment, representing relative positions of features with respect to one another. The model may also include representations of objects or boundaries in the environment, which are determined based on the features identified in the environment.

[0005] The VR system uses the mapped environment, including the model of the environment and the determined

location of the headset within the environment, to present media to the user. For example, the content of the media displayed to the user may be based on the environment. As another example, the content of the media may be based on the movement of the user within the environment or the movement of objects in the environment.

BRIEF DESCRIPTION OF THE DRAWINGS

[0006] FIG. 1 is a block diagram of a system environment in which a virtual reality console operates, in accordance with an embodiment.

[0007] FIG. 2 is a wire diagram of a virtual reality headset, in accordance with an embodiment.

[0008] FIG. 3 is a schematic diagram of fields of view of headset cameras, in accordance with an embodiment.

[0009] FIG. 4 is a flowchart illustrating a process for generating a three-dimensional model of an environment in which a virtual reality headset is used, in accordance with an embodiment.

[0010] The figures depict embodiments of the present disclosure for purposes of illustration only. One skilled in the art will readily recognize from the following description that alternative embodiments of the structures and methods illustrated herein may be employed without departing from the principles, or benefits touted, of the disclosure described herein.

DETAILED DESCRIPTION

Virtual Reality System Architecture

[0011] FIG. 1 is a block diagram of one embodiment of a virtual reality (VR) system environment 100 in which a VR headset 105 operates. The system environment 100 shown by FIG. 1 comprises the VR headset 105 and a VR input interface 140 that are each coupled to a VR console 110. While FIG. 1 shows an example system 100 including one VR headset 105 and one VR input interface 140, in other embodiments any number of these components may be included in the system 100. For example, there may be multiple VR headsets 105 each having an associated VR input interface 140, with each VR headset 105 and VR input interface 140 communicating with the VR console 110. In alternative configurations, different and/or additional components may be included in the system environment 100.

[0012] As further described below, the VR headset 105 presents media to a user that is based at least in part on the environment in which the headset is operated. In an example application, the content of the media presented by VR headset 105, such as virtual objects or characters included in the media and the positions of the objects or characters, are based on the model of the environment. For example, if the user operates the VR headset 105 in a classroom with chairs and desks, the model includes representations of the chairs and desks and the media includes virtual characters displayed as sitting in the chairs and virtual objects displayed on the desks. As another example, if the user operates the VR headset in a park with walking paths, the model includes boundaries of the walking path and representations of trees adjacent to the path, and the media includes virtual characters displayed walking along the paths and virtual animals displayed in trees adjacent to the path. The VR headset 105 may alternatively display media based on the user's interaction with or movements relative to the features in the

environment. For example, the media displayed may be influenced by the speed and distance a user runs along a path. As another example, a virtual object or character is moved based on the user's movement of a physical object in the environment.

[0013] To present media based on the environment in which the VR headset **105** is operated, the VR headset **105** includes two cameras capturing image data of the environment. The image data from each camera is used to separately map the environment by identifying features in the environment and determining a position of the VR headset relative to the features. In one embodiment, as further described below, the image data from each camera is processed by a simultaneous localization and mapping (SLAM) algorithm to identify the features and determine the headset's position. The features and position of the headset from the two image streams are then correlated, and the correlation is used to improve the accuracy of the headset's location relative to the features. The use of two cameras also provides binocular vision to determine a three-dimensional model of the features in the environment. Thus, using two cameras to image the environment improves the accuracy of determining the headset's position relative to the environment's features over systems using a single camera.

[0014] The VR headset **105** is a head-mounted display that presents media to a user. Examples of media presented by the VR head set include one or more images, video, audio, or some combination thereof. In some embodiments, audio is presented via an external device (e.g., speakers and/or headphones) that receives audio information from the VR headset **105**, the VR console **110**, or both, and presents audio data based on the audio information. In various embodiments, the VR headset **105** may comprise one or more rigid bodies, which may be rigidly or non-rigidly coupled to each other. A rigid coupling between rigid bodies causes the coupled rigid bodies to act as a single rigid entity. In contrast, a non-rigid coupling between rigid bodies allows the rigid bodies to move relative to each other. An example embodiment of the VR headset **105** is further described below in conjunction with FIG. 2.

[0015] As shown in FIG. 1, the VR headset **105** includes an electronic display **115**, at least two cameras **120**, one or more sensors **125**, and an inertial measurement unit (IMU) **130**. The electronic display **115** displays images to the user in accordance with data received from the VR console **110**. In various embodiments, the electronic display **115** may comprise a single electronic display or multiple electronic displays (e.g., a display for each eye of a user). In some embodiments, the media provided to the electronic display **115** for presentation to the user is pre-distorted to aid in correction of one or more types of optical errors. Additionally, the optical components may increase a field of view of the displayed media through magnification or through another suitable method. For example, the field of view of the displayed media is such that the displayed media is presented using a portion of the user's field of view (e.g., 110 degrees diagonal), or is displayed such that the displayed media is presented using all of the user's field of view (e.g., 180 degrees diagonal).

[0016] The two or more cameras **120** capture image data of an environment in which the VR headset **105** is operated. In one embodiment, the cameras **120** record a continuous stream of video data while the VR headset **105** is operated that can be analyzed to detect points of interest in the

environment. Alternatively, the cameras **120** may capture still-frame images at specified intervals of time (e.g., once every 0.5 seconds) while the VR headset **105** is operated. In one embodiment, at least part of the image data captured by the cameras **120** is displayed to the user of the headset **105** by the electronic display **115**, enabling the user to view the surrounding environment and virtual augmentations to the environment.

[0017] The IMU **130** is an electronic device that generates motion data based on measurement signals received from one or more of the sensors **125**. The motion data includes, for example, translational or rotational velocity and translational or rotational acceleration of the VR headset **105**. To generate the motion data, a sensor **125** generates one or more measurement signals in response to motion of the VR headset **105**, and may measure the absolute position or inertial movement of the sensor. Examples of the sensors **125** include: one or more accelerometers, one or more gyroscopes, one or more magnetometers, or any other suitable type of sensor, or some combination thereof. The sensors **125** may be located external to the IMU **130**, internal to the IMU **130**, or some combination thereof.

[0018] Based on the one or more measurement signals from one or more sensors **125**, the IMU **130** generates motion data indicating an estimated position of the VR headset **105** relative to an initial position of the VR headset **105**. For example, the sensors **125** include multiple accelerometers to measure translational motion (forward/back, up/down, left/right) and multiple gyroscopes to measure rotational motion (e.g., pitch, yaw, roll). In some embodiments, the IMU **130** rapidly samples the measurement signals and calculates the estimated position of the VR headset **105** from the sampled data. For example, the IMU **130** integrates the measurement signals received from the accelerometers over time to estimate a velocity vector and integrates the velocity vector over time to determine an estimated position of a reference point (e.g., intermediate estimated position) on the VR headset **105**. Alternatively, the IMU **130** provides the sampled measurement signals to the VR console **110**, which determines the motion data. The reference point is a point that may be used to describe the position of the VR headset **105**. The reference point may generally be defined as a point in space; however, in practice, the reference point is typically defined as a point within the VR headset **105** (e.g., a center of the IMU **130**).

[0019] The VR input interface **140** is a device that allows a user to send action requests to the VR console **110**. An action request is a request to perform a particular action. For example, an action request may be to start or end an application or to perform a particular action within the application. The VR input interface **140** may include one or more input devices. Example input devices include: a keyboard, a mouse, a game controller, or any other suitable device for receiving action requests and communicating the received action requests to the VR console **110**. An action request received by the VR input interface **140** is communicated to the VR console **110**, which performs an action corresponding to the action request. In some embodiments, the VR input interface **140** may provide haptic feedback to the user in accordance with instructions received from the VR console **110**. For example, haptic feedback is provided when an action request is received, or the VR console **110** communicates instructions to the VR input interface **140**

causing the VR input interface **140** to generate haptic feedback when the VR console **110** performs an action.

[0020] The VR console **110** provides media to the VR headset **105** for presentation to the user in accordance with information received from the VR headset **105** and the VR input interface **140**. In the example shown in FIG. 1, the VR console **110** includes an application store **145**, a mapping module **150**, and a virtual reality (VR) engine **155**. Some embodiments of the VR console **110** have different modules than those described in conjunction with FIG. 1. Similarly, the functions further described below may be distributed among components of the VR console **110** in a different manner than is described here.

[0021] The application store **145** stores one or more applications for execution by the VR console **110**. An application is a group of instructions that, when executed by a processor, generates media for presentation to the user. Media generated by an application may be in response to inputs received from the user via movement of the VR headset **105** or the VR interface device **140**. Examples of applications include: gaming applications, conferencing applications, video playback application, or other suitable applications.

[0022] The mapping module **150** maps the environment of the VR headset **105** and movements of the VR headset **105** within the environment using image data received from the cameras **120** and motion data received from the IMU **130**. While FIG. 1 illustrates the mapping module **150** executed by the VR console **110** in one embodiment, one or more functions of the mapping module **150** may alternatively be executed by a processor within the VR headset **105**.

[0023] Generally, the mapping module **150** maps the environment by periodically performing two SLAM algorithms—one for the image data received from each camera **120**—and correlating the outputs from each algorithm. The SLAM algorithms are described, for example, in Søren Riisgaard and Morten Rufus Blas (2005), “SLAM for Dummies: A Tutorial Approach to Simultaneous Localization and Mapping,” MIT Open Courseware, which is incorporated herein by reference in its entirety. Generally, each SLAM algorithm uses image data from a camera to identify features in the environment, such as walls, corners, or edges of objects, that are visible to the camera at an initial position of the headset **105**. The mapping module **150** determines the position of a point on the headset **105** relative to these features, such as a distance and angle between a reference point on the headset and each feature. The mapping module **150** also tracks movement of the VR headset **105** using motion data captured by the IMU **130**. For example, as the headset **105** is moved, the mapping module **150** determines a magnitude and direction of the headset’s movement, and continually estimates distances and angles between the reference point on the headset and expected positions of each of the features.

[0024] When the VR headset **105** is moved to a new position, the mapping module **150** estimates a position of the VR headset **105** relative to the previously-identified features based on the motion data received from the IMU **130**. The mapping module **150** also uses image data from each camera captured at the new position of the headset **105** to observe the features in the environment. These observations are compared to the position estimated based on the image data, and the comparison is used to update the position of the headset **105** relative to the features. After identifying the new position of the headset **105** relative to the known

features, the mapping module **150** may identify one or more additional features in the environment using the image data. For example, the mapping module **150** identifies features that were not visible to the cameras at the initial position of the headset **105**, but are visible at the new position. A process for mapping the environment and identifying the position of the headset in the environment is described further with respect to FIG. 4

[0025] The VR engine **155** executes applications within the system environment. Based at least in part on the features in the environment and the position of the VR headset **105** with respect to the features, the VR engine **155** determines media to provide to the VR headset **105** for presentation to the user. Additionally, the VR engine **155** performs an action within an application executing on the VR console **110** in response to an action request received from the VR input interface **140** and provides feedback to the user that the action was performed. The provided feedback may be visual or audible feedback via the VR headset **105** or haptic feedback via the VR input interface **140**.

[0026] FIG. 2 is a wire diagram of one embodiment of a virtual reality headset. The VR headset **200** is an embodiment of the VR headset **105** and includes a front rigid body **205** and a band **210**. The band **210** supports the front rigid body **205** when the VR headset **105** is worn by a user. The front rigid body **205** includes the electronic display **115** (not shown), the IMU **130**, the one or more sensors **125**, and the two or more cameras **120**. In the embodiment shown by FIG. 2, the sensors **125** are located within the IMU **130** and neither the sensors **125** nor the IMU **130** are visible to the user. Furthermore, FIG. 2 illustrates a reference point **215** located at a center of the IMU **130**, which in one embodiment is used as a reference point for tracking movement of the headset **105** through the environment. The reference point **215** may alternatively be located at other positions on the headset **105**.

[0027] The cameras **120** are positioned on or within the front rigid body **205**, and may not be visible to the user. In the embodiment of FIG. 2, the cameras **120** are positioned near opposite sides of the front rigid body **205**: the camera **120A** is positioned near a left side of the front rigid body **205**, while the camera **120B** is positioned near a right side. Each camera **120** has a field of view corresponding to an angle of the environment visible to the camera when in a fixed position. In one embodiment, the field of view of the camera **120A** partially overlaps the field of view of the camera **120B**.

[0028] Example fields of view of the cameras **120** are shown in FIG. 3. The first camera field of view **305A** is an angle of the environment visible to the first camera **120A** at a fixed position, while the second field of view **305B** is an angle of the environment visible to the second camera **120B** at a fixed position. As shown in FIG. 3, a portion of the field of view **305A** overlaps a portion of the field of view **305B**, while a portion of the field of view **305A** does not overlap the field of view **305B**. Similarly, a portion of the field of view **305B** does not overlap the field of view **305A**. The partial overlap between the fields of view **305A** and **305B** enables correlation between the features observed by both cameras, while the portions of the fields of view **305** that do not overlap increase the area of the environment that can be imaged by the cameras **120**.

Tracking a Virtual Reality Headset Using Overlapped Cameras

[0029] FIG. 4 is a flowchart illustrating a process for tracking the VR headset 105 using cameras with overlapped fields of view, according to one embodiment. In one embodiment, the steps of the process are performed by the VR console 110. However, in other embodiments, the steps of the process are performed by a processor within the headset 105 or by another computing device. Other embodiments may also include additional, fewer, or different steps, and may perform the steps in different orders.

[0030] The VR console 110 receives image data from the cameras 120 while the VR headset 105 is located at an initial location in the environment. Using the image data, which may include one or more still frame images or video data, the VR console 110 identifies 402 features in the environment of the headset 105. The environment's features are any interest points in the environment that can be used to localize the VR headset 105 within the environment and may be relevant for the media presented by the VR console 110. Thus, the identified features may include, for example, any lines, corners, or edges, which may correspond, for example, to walls, objects, or boundaries in the environment. To identify the features, the VR console 110 may apply any of a variety of edge or corner detection algorithms to the image data received from the cameras 120. The VR console 110 may also determine objects or boundaries in the environment based on the features. For example, the VR console 110 may use a clustering or regression algorithm to determine features that are part of the same object, and store the determined features together as a representation of the object.

[0031] Based on the identified features, the VR console 110 determines 404 the initial position of the headset 105 in the environment. In one embodiment, a position of the headset 105 in the environment can be represented as distances between a reference point 215 on the headset and one or more reference points in the environment, angles between the reference point 215 and the reference points in the environment, and an orientation of the headset 105 with respect to a gravitational axis. Thus, for example, the VR console 110 determines 404 the initial position based on distances between the reference point 215 and at least a subset of the identified features and stores the distances and an orientation of the VR headset 105 as the initial position of the headset. The VR console 110 also stores the coordinates representing positions of the identified features in the environment.

[0032] As a user of the headset 105 views media displayed by the headset, the user may move the VR headset 105 to different locations in the environment by walking through the environment, rotating or tilting his head from the initial position of the headset, or otherwise moving the headset 105. The VR console 110 receives 406 motion data from the VR headset 105 as the headset is moved throughout the environment. When the headset 105 is moved to a new location in the environment, the VR console 110 uses the motion data to estimate 408 the new position. In one embodiment, the VR console 110 uses the motion data to determine a vector representing an estimate of the new position of the headset relative to the initial headset position. For example, the VR console 110 receives data from motion sensors 125 on the headset 105, such as an accelerometer and a gyroscope, measured by the sensors during the move-

ment of the headset 105 from the initial position to the new position. The data from the motion sensors 125 includes directions and rates of the headset's movement, which can be used to derive information about the motion of the VR headset 105. The VR console 110 may alternatively receive motion data from other sensors, such as optical depth sensors positioned on the headset 105 or in the environment. Based on the received motion data, the VR console 110 determines a magnitude of the headset's movement and an angle between the initial position and the new position of the headset 105. In one embodiment, the VR console 110 continually tracks the movement of the VR headset 105 during use by calculating magnitudes and angles of the movement of the headset based on continuously-received motion data.

[0033] The VR console 110 also tracks movement of the VR headset 105 using image data captured by the cameras 120. To track the movement of the headset 105 from the initial position to the new position, the VR console 110 receives 410 image data from the first camera 120A on the headset 105 at the new position of the headset. The image data received from the first camera includes observations of at least a subset of the identified features in the environment. Based on the image data from the first camera 120A, the VR console 110 identifies 412 a first observation of the new position of the headset 105. For example, the VR console 110 determines the distance from the new position of the headset 105 to the features in the environment, and identifies the new position of the headset 105 based on a difference between the determined distance and the distance between the features and the initial position of the headset 105. For the new position of the VR headset 105, the VR console 110 generates 414 offset values representing a difference between the location of the headset 105 determined using the image data from the first camera and the location of the headset determined using the motion data. The VR console 110 stores the location of the headset 105 determined using the image data from the first camera 120A, as well as the offset values.

[0034] Similarly, the VR console 110 receives 416 image data from the second camera 120B captured at the new position of the headset. The image data from the second camera 120B includes observations of the features identified in the environment. Because a portion of the field of view of the second camera 120B overlaps a portion of the field of view of the first camera 120A, the subset of features visible in the image data captured by the second camera 120B may include some of the features visible in the image data captured by the first camera 120A. However, the subset may also include other features not visible to the first camera 120A that fall in a portion of the second camera's field of view that does not overlap the first camera's field of view. The VR console 110 uses the image data from the second camera to identify 418 a second observation of the new position of the headset 105. Like the first observation of the new position, the second observation may include a difference between a distance from the new position of the headset 105 to the features and a distance from the initial position of the headset 105 to the features. The VR console 110 also generates 420 offset values representing a difference between the location of the headset 105 determined using the image data from the second camera and the location of the headset determined using the motion data. The VR

console **110** stores the offset values and the location of the headset determined using the image data from the second camera **120B**.

[0035] The VR console **110** determines **422** a difference between the first observation of the new position and the second observation of the new position, and uses the determined difference to improve the measurements of the environment. In one embodiment, the VR console **110** uses the difference between the observations, the offset values corresponding to each observation, and a known geometric relationship between the cameras **120** to improve the calculations of the headset's position in the environment and the position of the objects in the environment. For example, the VR console **110** may improve the accuracy of the estimated location of the headset **105** determined using the motion data by applying a function of the offsets to the features observed in the overlapping portions of the camera fields of view. The VR console **110** may additionally or alternatively use the differences between the observations and the known geometric relationship between the cameras **120** to determine sizes of objects in the environment, improving the model of the environment for more accurately determining the position of the headset **105** in the environment and improving media presentation associated with the environment.

[0036] To improve the headset location and determine object sizes, the VR console **110** may use both features falling in the overlapped portions of the camera fields of view, as well as features falling in the portions of the camera fields of view that do not overlap. For features in the overlapped portions, the VR console **110** triangulates the positions of the features observed by each camera to determine the headset location and objects sizes. For features falling in the non-overlapping portions of the camera fields of view, the VR console **110** determines absolute distances between the features and the headset by estimating relative motion of the features. Because both cameras are fixed to the headset **105** with a given geometric relationship (e.g., given by a position vector from camera **120A** to camera **120B**), there is a known relationship between apparent velocities of the two cameras as the headset **105** is moved. If the movement of the headset **105** has non-zero angular motion, the VR console **110** computes the local velocity of the cameras **120** relative to one another by calculating a cross-product between the position vector between the cameras **120** and the rotational motion of the headset. If the movement of the headset **105** does not have angular motion, the VR console **110** computes the local velocity by determining locations of features at more than two positions of the headset **105**. The VR console **110** then solves the following system of equations for scale_A and scale_B:

$$(scale_B) * B - (scale_A) * A = v_c$$

where **A** is a vector representing a distance between a feature and camera **120A** in each of three dimensions, **B** is a vector representing a distance between the feature and camera **120B** in each of the three dimensions, and v_c is the relative local velocity of the cameras **120**. The values scale_A and scale_B represent the full translational and rotational motion of the headset **105**, and can be used to determine the headset location and the sizes of objects in the environment.

[0037] After determining the difference between the first and second observations of the new position of the VR headset **105**, the VR console **110** may identify **424** one or

more additional features in the environment using the image data from the first camera **120A** and/or the second camera **120B**. For example, the VR console **110** identifies features that were not visible to the cameras **120** at the initial position of the headset, but are visible at the new position. The additional features may then be used in determining positions of the headset subsequent to the new position. In one embodiment, the VR console **110** also determines features that have moved within the environment. For example, if a physical object in the environment moves as the user moves the headset **105**, the VR console **110** may determine the new position of the object relative to the new position of the headset **105** after determining the position of the headset relative to static features in the environment.

[0038] The VR console **110** displays **426** media to the user of the VR headset **105** based at least in part on the new position of the headset **105** in the environment and the features in the environment. The media displayed to the user may include a representation of the environment in which the headset **105** is operated, as well as virtual augmentations to the environment. For example, the VR console **110** may augment the environment by adding virtual objects or characters to the environment, as displayed to the user by the electronic display **115**. As the user moves within the environment, the VR console **110** may change the displayed media. For example, if the user turns his head to the left, the VR console **110** provides media that mirrors the user's movement (e.g., displays a new portion of the environment and new virtual objects in the new portion of the environment). Alternatively, the media displayed to the user may be affected by the environment and/or the user's movements through the environment without displaying a representation of the environment to the user. For example, the VR console **110** may display a virtual object instead of a physical object present in the environment, and display the virtual object being moved when the user moves the physical object.

SUMMARY

[0039] The foregoing description of the embodiments of the disclosure has been presented for the purpose of illustration; it is not intended to be exhaustive or to limit the disclosure to the precise forms disclosed. Persons skilled in the relevant art can appreciate that many modifications and variations are possible in light of the above disclosure.

[0040] The foregoing description of the embodiments of the disclosure has been presented for the purpose of illustration; it is not intended to be exhaustive or to limit the disclosure to the precise forms disclosed. Persons skilled in the relevant art can appreciate that many modifications and variations are possible in light of the above disclosure.

[0041] Some portions of this description describe the embodiments of the disclosure in terms of algorithms and symbolic representations of operations on information. These algorithmic descriptions and representations are commonly used by those skilled in the data processing arts to convey the substance of their work effectively to others skilled in the art. These operations, while described functionally, computationally, or logically, are understood to be implemented by computer programs or equivalent electrical circuits, microcode, or the like. Furthermore, it has also proven convenient at times, to refer to these arrangements of operations as modules, without loss of generality. The

described operations and their associated modules may be embodied in software, firmware, hardware, or any combinations thereof.

[0042] Any of the steps, operations, or processes described herein may be performed or implemented with one or more hardware or software modules, alone or in combination with other devices. In one embodiment, a software module is implemented with a computer program product comprising a computer-readable medium containing computer program code, which can be executed by a computer processor for performing any or all of the steps, operations, or processes described.

[0043] Embodiments of the disclosure may also relate to an apparatus for performing the operations herein. This apparatus may be specially constructed for the required purposes, and/or it may comprise a general-purpose computing device selectively activated or reconfigured by a computer program stored in the computer. Such a computer program may be stored in a non-transitory, tangible computer readable storage medium, or any type of media suitable for storing electronic instructions, which may be coupled to a computer system bus. Furthermore, any computing systems referred to in the specification may include a single processor or may be architectures employing multiple processor designs for increased computing capability.

[0044] Embodiments of the disclosure may also relate to a product that is produced by a computing process described herein. Such a product may comprise information resulting from a computing process, where the information is stored on a non-transitory, tangible computer readable storage medium and may include any embodiment of a computer program product or other data combination described herein.

[0045] Finally, the language used in the specification has been principally selected for readability and instructional purposes, and it may not have been selected to delineate or circumscribe the inventive subject matter. It is therefore intended that the scope of the disclosure be limited not by this detailed description, but rather by any claims that issue on an application based hereon. Accordingly, the disclosure of the embodiments is intended to be illustrative, but not limiting, of the scope of the disclosure, which is set forth in the following claims.

What is claimed is:

1. A system comprising:

a virtual reality headset;

a first camera and a second camera on the virtual reality headset, each camera having a field of view and capturing image data of an environment of the virtual reality headset, wherein a portion of the fields of view of the first and second cameras overlap and a portion of the fields of view do not overlap; and

a processor receiving the image data from the first and second cameras and configured to:

identify a first observation of a position of the virtual reality headset in the environment and positions of a plurality of features in the environment based on the image data captured by the first camera;

identify a second observation of the position of the virtual reality headset in the environment and the positions of the plurality of features in the environment based on the image data captured by the second camera; and

generate a three-dimensional model of the environment based on the first observation and the second observation.

2. The system of claim 1, wherein the virtual reality headset comprises an electronic display configured to display media to a user, and wherein the processor is further configured to:

display media to the user by the electronic display based at least in part on the model of the environment.

3. The system of claim 2, wherein displaying the media comprises:

displaying one or more virtual objects positioned in the environment based on the model of the environment.

4. The system of claim 2, wherein displaying the media comprises:

detecting changes in positions of one or more features in the environment; and

modifying the displayed media responsive to the detected changes.

5. The system of claim 1, wherein the processor is further configured to identify an initial position of the virtual reality headset in the environment by identifying distances between a reference point of the headset at the initial position and each of the identified features.

6. The system of claim 5, further comprising:

one or more motion sensors on the virtual reality headset, each motion sensor generating motion data corresponding to movement of the virtual reality headset;

wherein the processor is further configured to, after the virtual reality headset has been moved from the initial position to a new position in the environment:

generate a first estimate of the new position based on the motion data;

generate a second estimate of the new position based on observations of the features in image data captured by the first and second cameras;

determine a difference between the second estimate and the first estimate; and

identify the new position of the virtual reality headset based on the first estimate, the second estimate, and the determined difference.

7. The system of claim 6, wherein generating the second estimate comprises correlating features observed in image data captured by the first camera with features observed in image data captured by the second camera.

8. The system of claim 6, wherein the virtual reality headset comprises an electronic display configured to display media to a user, and wherein the processor is further configured to display media to the user based at least in part on the motion data.

9. The system of claim 5, wherein the processor is further configured to:

identify one or more additional features in the environment based on the image data captured by the first camera and the image data captured by the second camera at the new position of the virtual reality headset.

10. The system of claim 1, wherein the processor is further configured to:

identify a size of an object in the environment based on the plurality of features in the image data captured by the first camera and the plurality of features in the image data captured by the second camera.

- 11.** A method comprising:
receiving image data of an environment of a virtual reality headset, the image data captured by a first camera and a second camera coupled to the virtual reality headset and each having a field of view, wherein a portion of the fields of view of the first and second cameras overlap and a portion of the fields of view do not overlap;
identifying a first observation of a position of the virtual reality headset in the environment and positions of a plurality of features in the environment based on the image data captured by the first camera;
identifying a second observation of the position of the virtual reality headset in the environment and the positions of the plurality of features in the environment based on the image data captured by the second camera; and
generating a three-dimensional model of the environment based on the first observation and the second observation.
- 12.** The method of claim **11**, wherein the virtual reality headset comprises an electronic display configured to display media to a user, and wherein the method further comprises:
displaying media to the user by the electronic display based at least in part on the model of the environment.
- 13.** The method of claim **12**, wherein displaying the media comprises:
displaying one or more virtual objects positioned in the environment based on the model of the environment.
- 14.** The method of claim **12**, wherein displaying the media comprises:
detecting changes in positions of one or more features in the environment; and
modifying the displayed media responsive to the detected changes.
- 15.** The method of claim **11**, further comprising:
identifying an initial position of the virtual reality headset in the environment by identifying distances between a reference point of the headset at the initial position and each of the identified features.
- 16.** The method of claim **15**, wherein the virtual reality headset further comprises one or more motion sensors each generating motion data corresponding to movement of the virtual reality headset, the method further comprising, after the virtual reality headset has been moved from the initial position to a new position in the environment:
generating a first estimate of the new position based on the motion data;
generating a second estimate of the new position based on observations of the features in image data captured by the first and second cameras; and
determining a difference between the second estimate and the first estimate.
- 17.** The method of claim **16**, wherein generating the second estimate comprises correlating features observed in image data captured by the first camera with features observed in image data captured by the second camera.
- 18.** The method of claim **16**, wherein the virtual reality headset comprises an electronic display configured to display media to a user, and wherein the method further comprises displaying media to the user based at least in part on the motion data.
- 19.** The method of claim **15**, further comprising:
identifying one or more additional features in the environment based on the image data captured by the first camera and the image data captured by the second camera at the new position of the virtual reality headset.
- 20.** The method of claim **11**, further comprising:
identifying a size of an object in the environment based on the plurality of features in the image data captured by the first camera and the plurality of features in the image data captured by the second camera.

* * * * *